

LACEHAVEN MANOR : SINGLE FAMILY DWELLING (NEW BUILD)



LOT COVERAGE & SQUARE FOOTAGE

+ ALLOWABLE LOT COVERAGE: TOTAL LOT = 11,688 SF * .45 = **5,259.60 SF**
 + TOTAL LOT COVERAGE: 4,769.22 SF = 40.80%

GROUND LEVEL
 + CONDITIONED SPACE AT GROUND LEVEL = 3,304 SF
 + COVERED PATIO = 338 SF
 + GARAGE = 744 SF
 TOTAL FOOT PRINT = 4,386 SF

+ CONDITIONED SPACE AT SECOND LEVEL = 1,205 SF
 TOTAL: 1,205 SF

**TOTAL CONDITIONED SQUARE FOOTAGE = +/- 4,509 SF

CITY OF DALLAS CONSTRUCTION CODES:

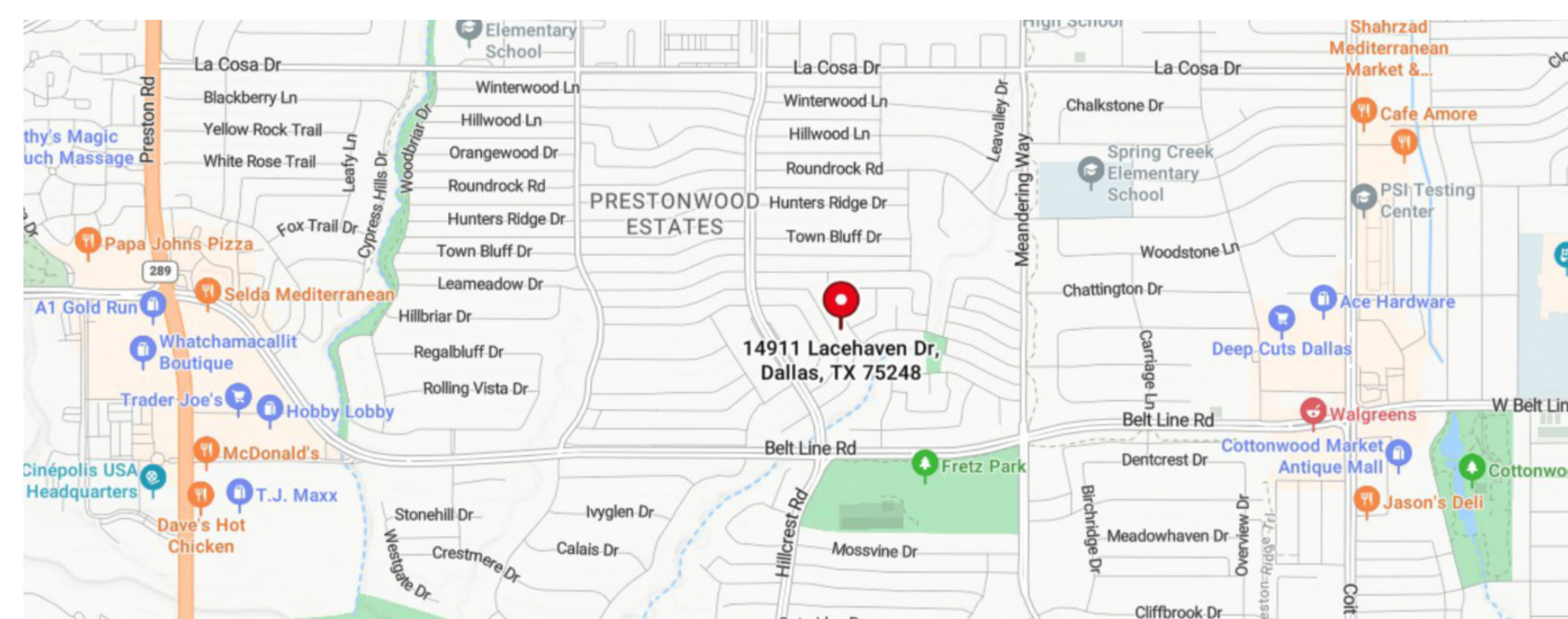
CHAPTER 16: 2021 International Fire Code, with Dallas Amendments (effective May 12, 2023)
 The Fire Code amendments include adoption of the 2021 Edition of the following Standards: Sprinklers, NFPA 13, 13D, 13R and Fire Alarm, NFPA 72.

CHAPTER 53: 2021 International Building Code with Dallas Amendments
 Code Update: Ordinance Number 32421 (effective May 12, 2023)

CHAPTER 54: 2021 International Plumbing Code with Dallas Amendments
 CHAPTER 55: 2021 International Mechanical Code with Dallas Amendments
 CHAPTER 56: 2023 National Electrical Code with Dallas Amendments (effective May 12, 2023)
 CHAPTER 57: 2021 International Residential Code with Dallas Amendments
 Code Update: Ordinance Number 32421 (effective May 12, 2023)

CHAPTER 58: 2021 International Existing Building Code with Dallas Amendments (effective May 12, 2023)
 CHAPTER 59: 2021 International Energy Conservation Code with Dallas Amendments
 CHAPTER 60: 2021 International Fuel & Gas Code with Dallas Amendments
 CHAPTER 61: 2015 International Green Construction Code with Dallas Amendments
 CHAPTER 62: 2021 International Swimming Pool and Spa Code with Dallas Amendments (effective June 13, 2022)
 CHAPTER 52: Administrative Procedures for the Construction Codes of the Dallas City Code

SITE LOCATION MAP



AI GENERATED CONCEPT RENDERING

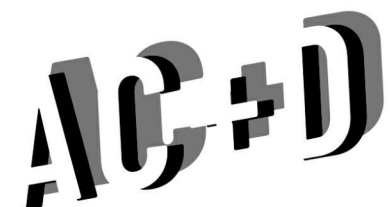
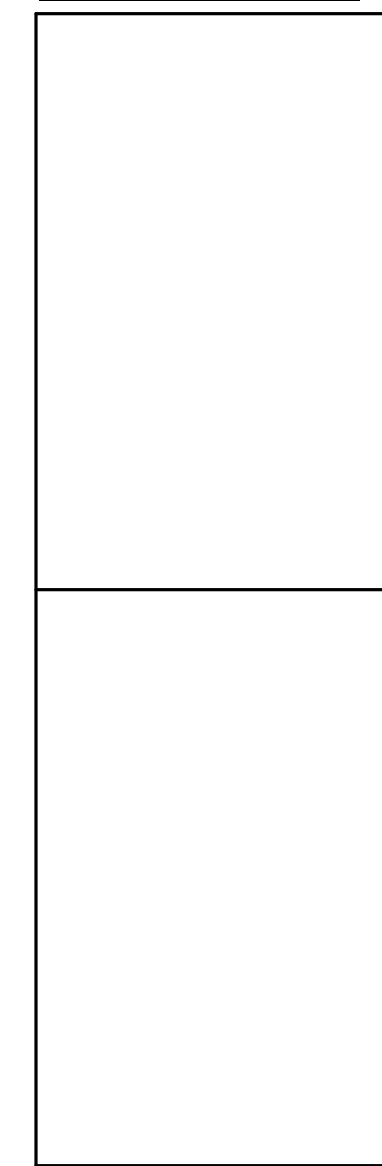


SHEET LIST	
Sheet Number	Sheet Name
G-00	COVER SHEET
G-01	SITE PLAN
A-1	CONSTRUCTION PLAN AT GROUND LEVEL
A-2	LIGHTING PLAN AT GROUND LEVEL
A-3	CONSTRUCTION PLAN AT SECOND LEVEL
A-4	LIGHTING PLAN AT SECOND LEVEL
A-5	ROOF PLAN
A-6	ELEVATIONS
A-7	ELEVATIONS
A-8	3D VIEWS
A-9	3D VIEWS

GENERAL NOTES:

- VERIFY ALL DIMENSIONS AND CONDITIONS SHOWN ON PLAN AND EXISTING SITE. NOTIFY THE GENERAL CONTRACTOR AND PROJECT DESIGN TEAM OF CONFLICTS AND/OR VARIATIONS PRIOR TO COMMENCEMENT OF CONSTRUCTION. NOTIFY THE DESIGN TEAM IN WRITING OF CONFLICTS FOUND DURING CONSTRUCTION FOR ADDITIONAL INSTRUCTIONS AND/OR INCLUSION TO SCOPE OF WORK.
- DO NOT SCALE DRAWINGS. NOTIFY THE DESIGN TEAM OF MISSING OR OMITTED DIMENSIONS PRIOR TO COMMENCEMENT OF CONSTRUCTION. THE DESIGN TEAM IS NOT RESPONSIBLE FOR DISCREPANCIES OR CORRECTIONS RESULTING FROM ANY FAILURE TO NOTIFY.
- ALL FEDERAL, STATE, AND LOCAL CODES, ORDINANCES, AND REGULATIONS SHALL TAKE PRECEDENCE AT ALL TIMES. NOTIFY THE DESIGN TEAM IN WRITING OF ANY DISCREPANCIES THAT MAY RESULT.
- DRAWINGS ARE TO COMMUNICATE DESIGN INTENT ONLY. THE DESIGN TEAM IS NOT RESPONSIBLE FOR COORDINATING CONSULTANTS INCLUDING, BUT NOT LIMITED TO, STRUCTURAL, CIVIL, ELECTRICAL, MECHANICAL, PLUMBING AND LANDSCAPING. NOTIFY THE DESIGN TEAM IN WRITING FOR ELEMENTS THAT NEED TO BE PLACED STRATEGICALLY TO ALIGN WITH DESIGN INTENT (I.E. BEAMS, REGISTERS, SMOKE ALARMS, OXYGEN SENSORS, ETC).
- OWNER IS RESPONSIBLE FOR FINAL MATERIAL, FINISH, AND PRODUCT SELECTIONS.
- GENERAL CONTRACTOR IS RESPONSIBLE FOR ALL MEANS AND METHODS OF CONSTRUCTION AND IS RESPONSIBLE TO ENSURE FINAL CONSTRUCTION SYSTEMS ARE INSTALLED PER CODE AND MANUFACTURE RECOMMENDATIONS.

CITY OF DALLAS BATCH STAMP



ANTHONY CARDEN + DESIGN
<https://www.acardendesign.com/>

PRIMARY CONTACT:
 ANTHONY CARDEN
 305.878.1802
 anthony@acardendesign.com

SECONDARY CONTACT:
 LANDON BRADSHAW
 469.955.1001
 landon@acardendesign.com

SEVEN FIFTEEN
 CUSTOM HOMES

PROJECT DEVELOPER:
 SEVEN FIFTEEN CUSTOM HOMES

PRIMARY CONTACT:
 KRISTIAN ROBINSON
 214.986.1770
 Kristian.Robinson@sevenfifteeninvest.com

DALLAS GREEN CHECK LIST:

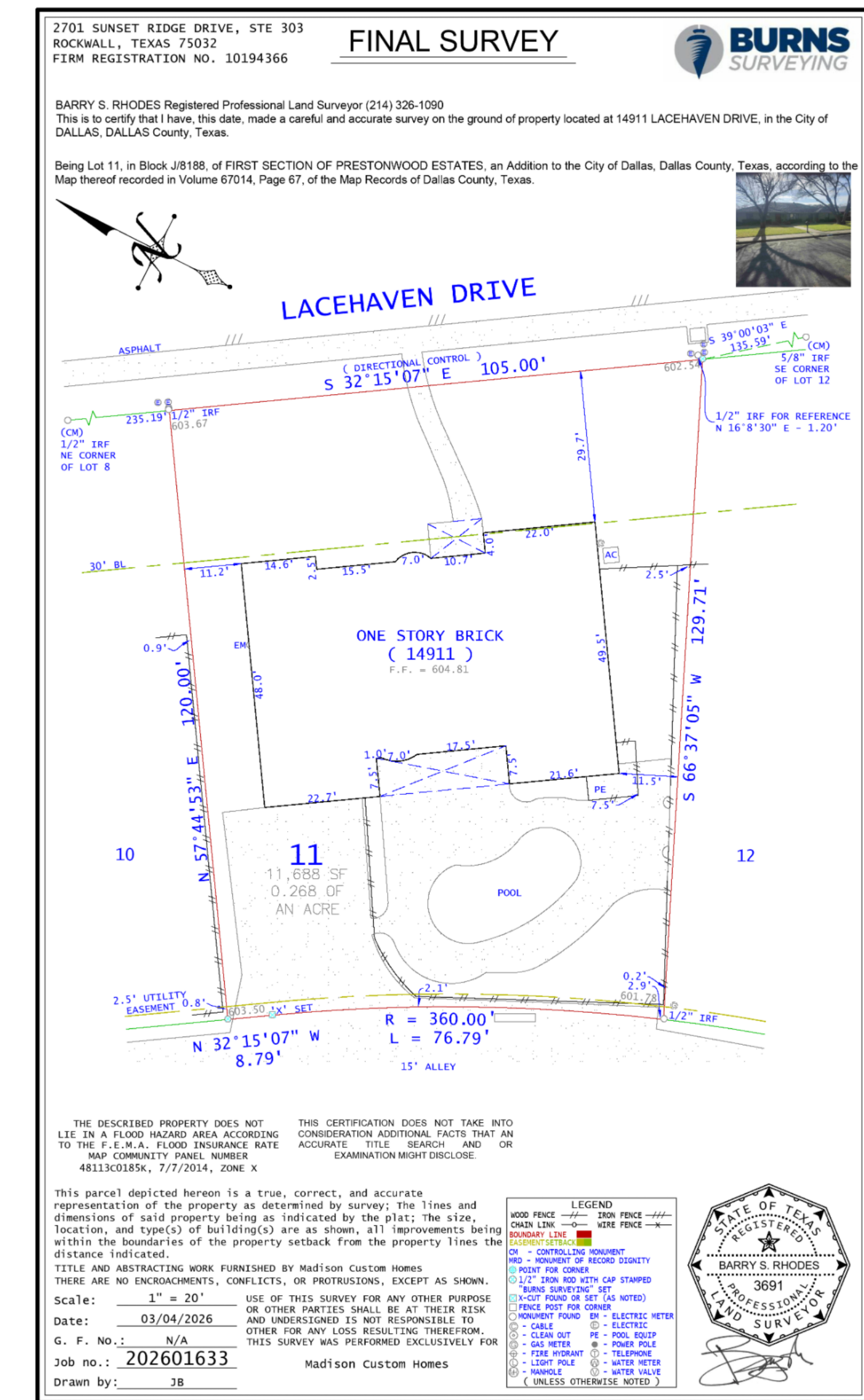
- ALL REQUIREMENTS WILL BE MET.
- ALL AIR-HANDLING EQUIPMENT AND DUCTWORK WILL BE LOCATED OUTSIDE THE FIRE-RATED ENVELOPE OF THE GARAGE.
- SURFACES BETWEEN CONDITIONED SPACE AND THE ATTACHED GARAGE WILL BE TIGHTLY SEALED, CEILING JOINT BAYS WILL BE SEALED, AND THE WALLS AND CEILING OF CONDITIONED SPACES ABOVE THE GARAGE WILL BE PAINTED.
- FOR CONDITIONED SPACES NEXT TO THE GARAGE, ALL PENETRATIONS WILL BE SEALED. ALL DOORS WILL BE WEATHERED-STRIPPED, AND ALL CRACKS AT THE BASE OF THE WALL WILL BE SEALED.
- AIR FILTERS WILL BE INSTALLED WITH A MINIMUM REPORTING VALUE (MERV) EQUAL OR GREATER THAN 8.
- AIR HANDLERS INSTALLED WILL BE ABLE TO MAINTAIN ADEQUATE AIR PRESSURE AND AIR FLOW.
- AIR FILTER HOUSING WILL BE AIRTIGHT TO PREVENT BYPASS OR LEAKAGE.

CODE AND ZONING PROJECT GUIDE LINES

ZONING = R10(A)
 USE = SINGLE FAMILY DWELLING

MINIMUM FRONT YARD = 30'-0"
 MINIMUM REAR YARD = 6'-0"
 MINIMUM SIDE YARD = 6'-0"
 HEIGHT MAXIMUM = 30'-0"
 MAXIMUM LOT COVERAGE = 45%

PROJECT SURVEY



2026-04-22 14911 LACEHAVEN DRIVE PERMIT DOCUMENTS

NOTIFY PROJECT DESIGN TEAM AND GENERAL CONTRACTOR IN WRITING OF ALL CONFLICTS IN DOCUMENTATION PRIOR TO CONTINUING WORK.

COVER SHEET

G-00

14911 LACEHAVEN DRIVE, DALLAS, TEXAS 75248
 DALLAS COUNTY

14911 LACEHAVEN DRIVE

+ BLOCK: J18188
 + LOT: 11

PRINT SCALE: 3/04/26

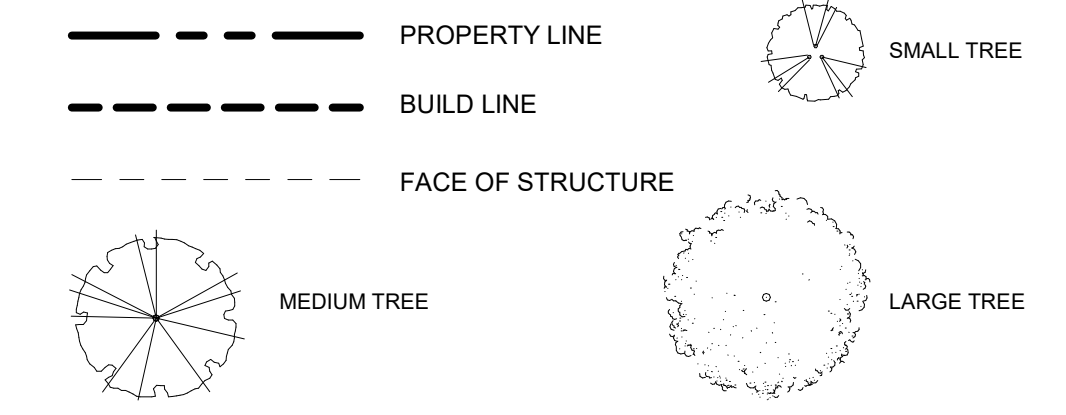
LOT COVERAGE & SQUARE FOOTAGE

+ ALLOWABLE LOT COVERAGE: TOTAL LOT = 11,688 SF * .45 = **5,259.60 SF**
 + TOTAL LOT COVERAGE: 4,769.22 SF = 40.80%

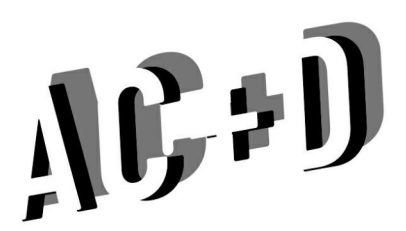
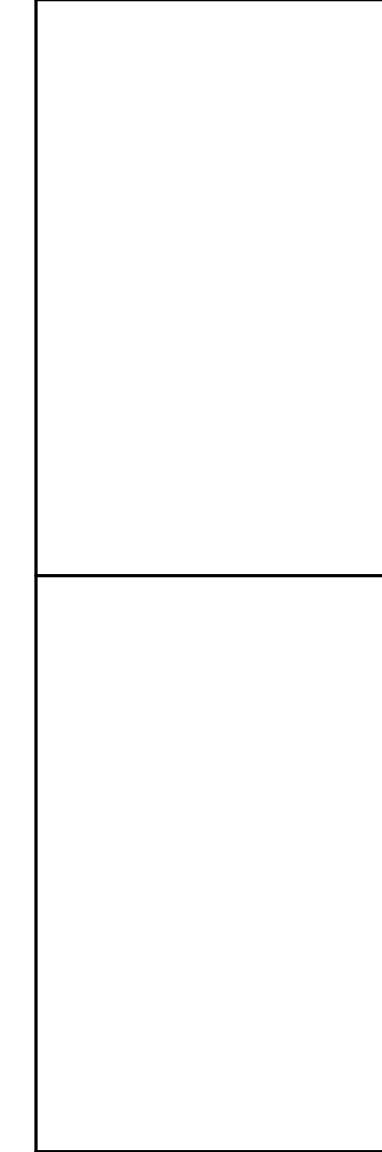
GROUND LEVEL	
+ CONDITIONED SPACE AT GROUND LEVEL =	3,304 SF
+ COVERED PATIO =	338 SF
+ GARAGE =	744 SF
TOTAL FOOT PRINT =	4,386 SF
SECOND LEVEL	
+ CONDITIONED SPACE AT SECOND LEVEL =	1,205 SF
TOTAL:	1,205 SF

**TOTAL CONDITIONED SQUARE FOOTAGE = +/- 4,509 SF

SITE PLAN GRAPHIC LEGEND



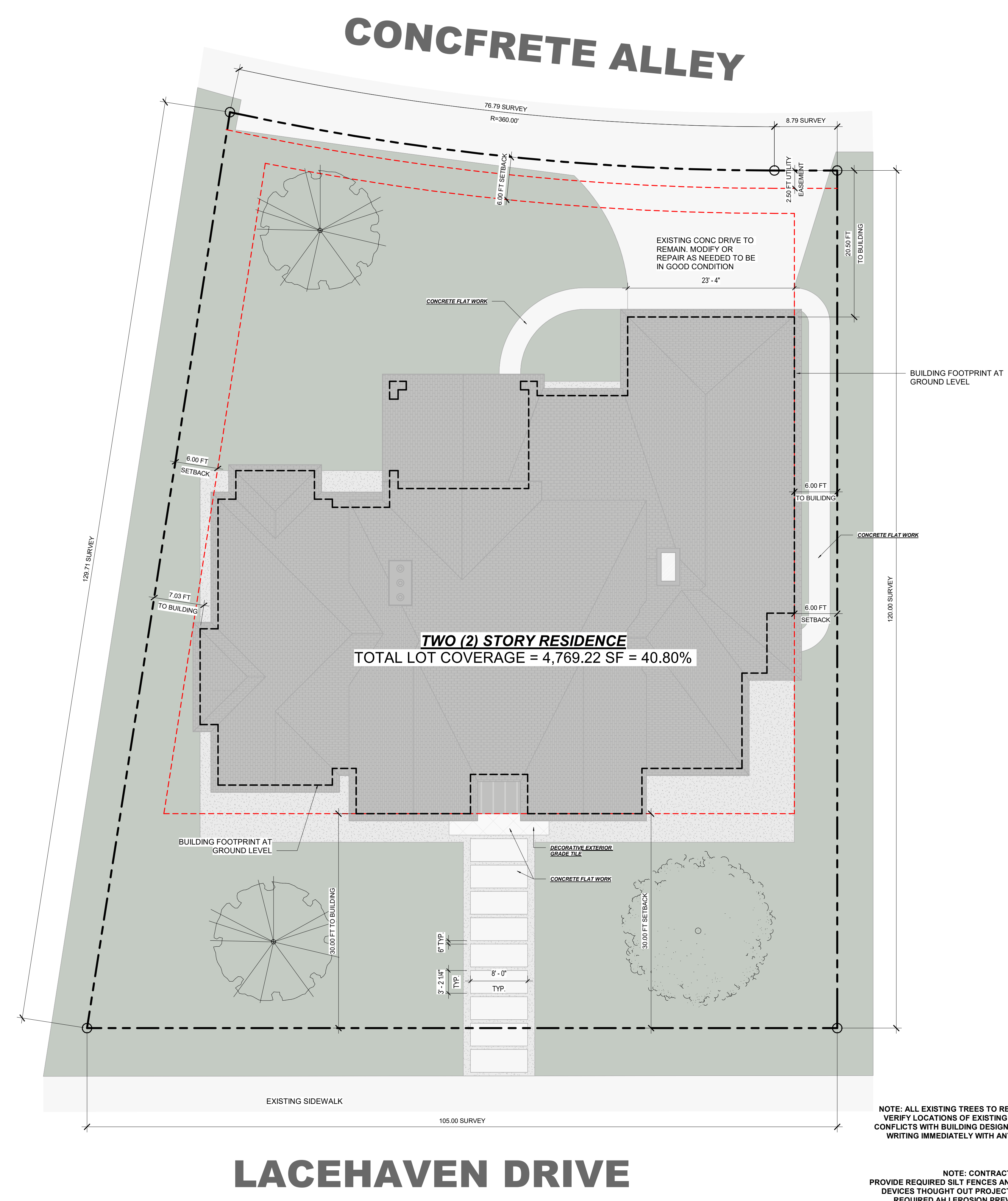
CITY OF DALLAS BATCH STAMP



ANTHONY CARDEN + DESIGN
 https://www.acardendesign.com/
 PRIMARY CONTACT:
 ANTHONY CARDEN
 305.878.1802
 anthony@acardendesign.com
 SECONDARY CONTACT:
 LANDON BRADSHAW
 469.955.1001
 landon@acardendesign.com



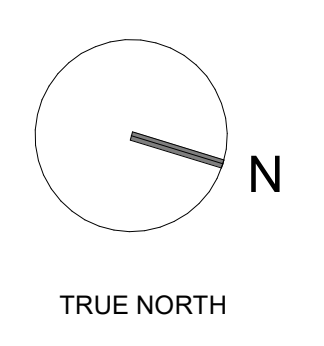
PROJECT DEVELOPER:
 SEVEN FIFTEEN CUSTOM HOMES
 PRIMARY CONTACT:
 KRISTIAN ROBINSON
 214.886.1170
 Kristian.Robinson@sevenfifteeninvest.com



NOTE: ALL EXISTING TREES TO REMAIN. CONTRACTOR TO VERIFY LOCATIONS OF EXISTING TREES TO ENSURE NO CONFLICTS WITH BUILDING DESIGN. NOTIFY DESIGN TEAM IN WRITING IMMEDIATELY WITH ANY CONFLICTS ON SITE.

NOTE: CONTRACTOR TO PROVIDE REQUIRED SILT FENCES AND DRAINAGE PROTECTION DEVICES THOUGHT OUT PROJECT SITE ALONG WITH ALL REQUIRED AHJ EROSION PREVENTATIVE DEVICES.

1 SITE PLAN
 1/8" = 1'-0"



14911 LACEHAVEN DRIVE

14911 LACEHAVEN DRIVE, DALLAS, TEXAS 75248
 DALLAS COUNTY

+ BLOCK: J18188
 + LOT: 11

2026-04-22 14911 LACEHAVEN DRIVE PERMIT DOCUMENTS

NOTIFY PROJECT DESIGN TEAM AND GENERAL CONTRACTOR IN WRITING OF ALL COMPLETES IN DOCUMENTATION PRIOR TO CONTINUING WORK.

SITE PLAN
G-01

PRINT SCALE: 3/32" = 1'-0"

WALL TYPE HATCH LEGEND

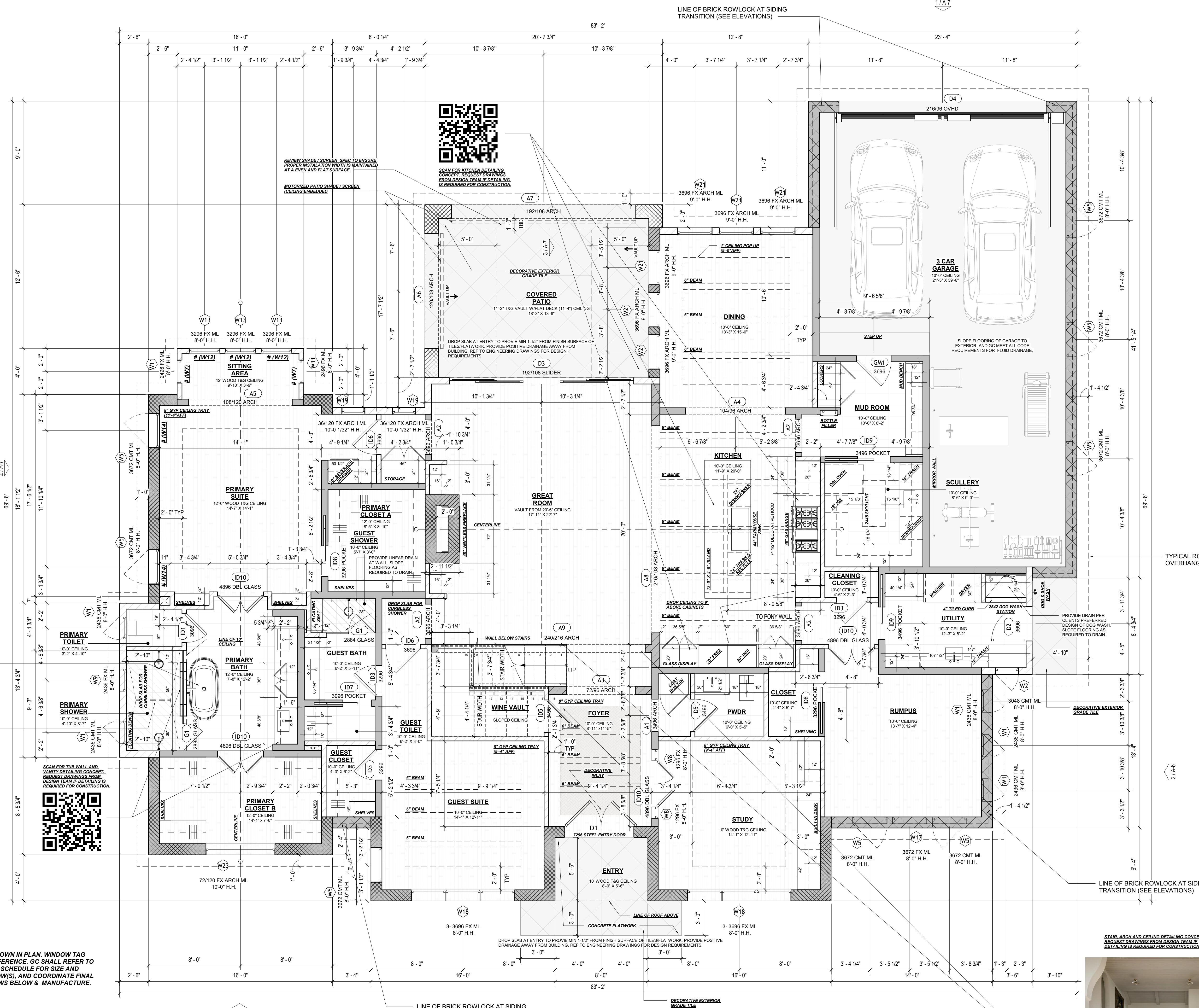
EXTERIOR WALLS:

- EXTERIOR: 6" STUD WITH BRICK MASONRY BOTH SIDES
- EXTERIOR: 6" STUD WITH BRICK MASONRY WITH 5/8" GYP (INTERIOR) REF. TO ELEVATIONS FOR STYLE
- EXTERIOR: 6" STUD WITH BRICK MASONRY SIDING ABOVE WITH 5/8" GYP (INTERIOR)
- EXTERIOR 44" BRICK MASONRY WANSBOT, CAST STONE WATER TABLE OVER MASONRY VERTICAL BOARD & BATTEN SIDING ABOVE MASONRY INTERIOR FINISH 5/8" GYP BD
- EXTERIOR: 6" STUD WITH VERTICAL SIDING WITH 5/8" GYP (INTERIOR)

INTERIOR WALLS:

- INTERIOR: 6" STUD WITH STONE MASONRY WALL- REF. TO ELEVATIONS FOR STYLE
- STONE MASONRY FRAMED WALL ONE SIDE WITH 5/8" GYP FINISH OTHER SIDE (FIREPLACE) 6" STUD WITH STONE MASONRY ONE SIDE OR SOLID MASONRY FIREPLACE
- INTERIOR: DOUBLE 8" STUD WITH 5/8" GYP
- INTERIOR: 6" STUD WITH 5/8" GYP
- INTERIOR: 4" STUD WITH 5/8" GYP

CITY OF DALLAS BATCH STAMP



GENERAL PLAN NOTES

- ALL DIMENSIONS ARE TO FINISH FACE OF EXTERIOR WALL OR TO FACE OF GYPSUM BOARD, UNO.
- TYPICAL WALLS NOTES:
 - A. TYPICAL EXTERIOR GROUND LEVEL WALLS ARE 2X6 FRAMING, UNO.
 - B. TYPICAL INTERIOR WALLS ARE 2X4 FRAMING, UNO.
 - C. PLUMBING WALLS ARE 2X6 FRAMING, UNO.
 - D. ALL WALLS CONTAINING POCKET DOORS AT TO BE 2X6 FRAMING, UNO.
 - E. ALL BLOCKING TO BE 2X12
- DOORS HAVE 4" JAMB OR ARE CENTERED IN ROOM / OPENING, UNO.
- CABINETS & APPLIANCES INDICATED ARE REPRESENTATIVE OF WHAT IS TO BE INSTALLED. REFER TO FINAL SELECTIONS FOR EXACT DIMENSIONING AND INSTALLATION REQUIREMENTS. OWNER IS RESPONSIBLE FOR FINAL FINISH & PRODUCT SELECTION.
- COORDINATE AND FIELD VERIFY ROUGH OPENINGS, FRAMING, AND CONNECTIONS FOR CABINETS AND APPLIANCES BEFORE FABRICATION AND INSTALLATION.
- COORDINATE AND FIELD VERIFY LOCATIONS FOR LIGHTING FIXTURES, FANS, ELECTRICAL OUTLETS & SWITCHES, MECHANICAL GRILLES, AND OTHER WALL & CEILING MOUNTED APPARATUS BEFORE INSTALLATION.
- CEILING HEIGHT IS 10'-0" AFF ON GROUND LEVEL, 9'-0" AFF ON L2.
- INTERMEDIATE FLOOR PLATES ARE 1'-6" UNLESS OTHERWISE NOTED.
- LIGHT FIXTURES SHOWN ARE GENERIC. REFER TO FINAL SELECTIONS FOR EXACT DIMENSIONING AND INSTALLATION REQUIREMENTS. OWNER IS RESPONSIBLE FOR FINAL FINISH & PRODUCT SELECTION.
- NOT ALL CEILING MOUNTED ELEMENTS ARE SHOWN.
- ALL CLOSETS TO HAVE MOTION SENSOR SWITCHES INSIDE OF CLOSET.
- ALL PATHWAY LIGHTING TO BE CONNECTED TO DAYLIGHT SENSORS.
- DOOR AND WINDOW SIZES ARE REPRESENTED IN NOMINAL INCHES ON TAGS AND SCHEDULES. GENERAL CONTRACTOR AND MANUFACTURER SHALL COORDINATE FINAL SIZES ACCORDINGLY. ROUGH OPENING SIZES SHALL BE DETERMINED AND COORDINATED BY GENERAL CONTRACTOR AND ALL APPLICABLE TRADE CONTRACTORS. NOTIFY DESIGNER IMMEDIATELY OF CONFLICTS.

LOT COVERAGE & SQUARE FOOTAGE

+ ALLOWABLE LOT COVERAGE: TOTAL LOT = 11,688 SF = 45 = 5,259.60 SF
 + TOTAL LOT COVERAGE: 4,769.22 SF = 40.80%

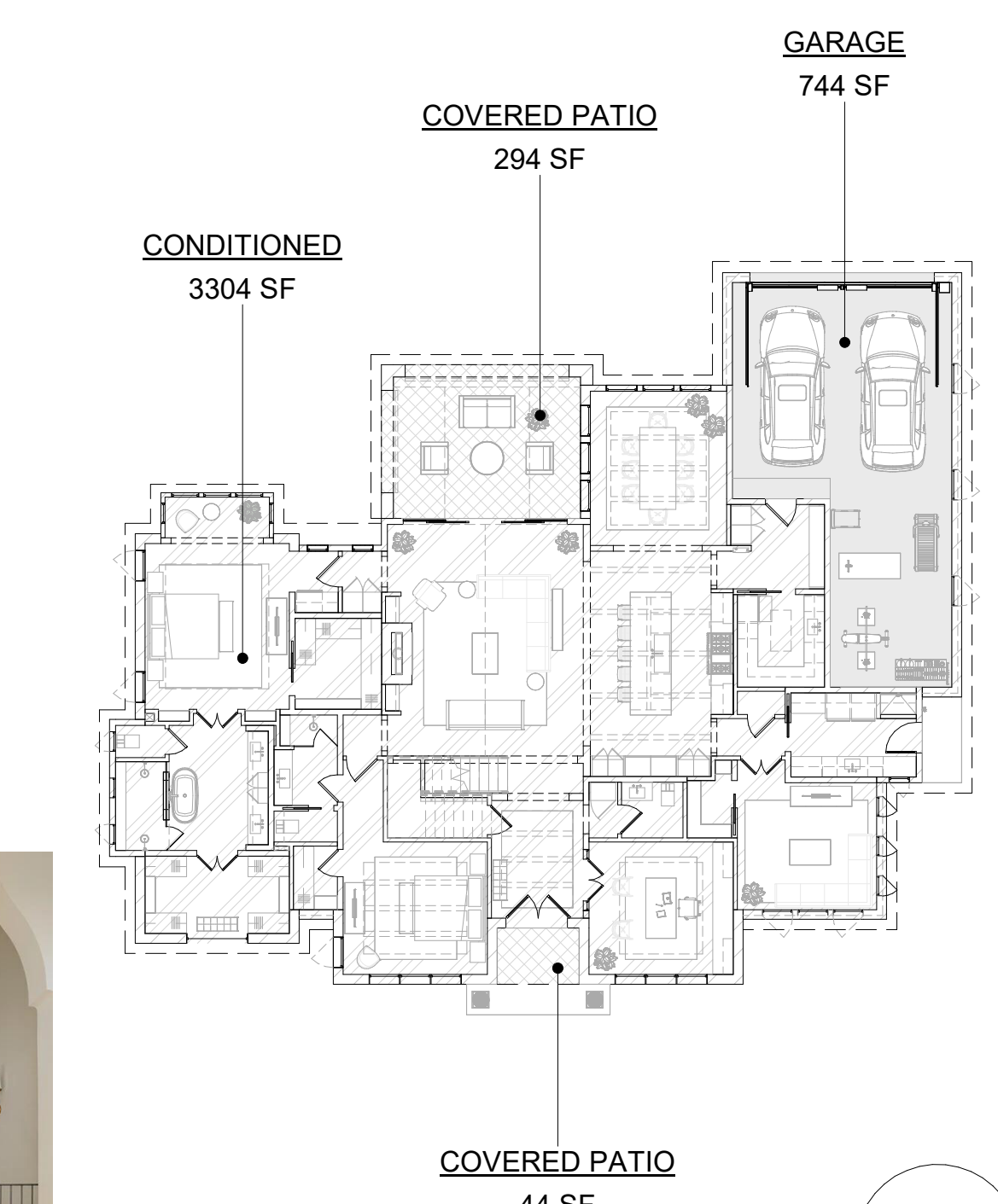
GROUND LEVEL
 + CONDITIONED SPACE AT GROUND LEVEL = 3,304 SF
 + COVERED PATIO = 338 SF
 + GARAGE = 744 SF
 TOTAL FOOT PRINT = 4,386 SF

+ CONDITIONED SPACE AT SECOND LEVEL = 1,205 SF
 TOTAL = 1,205 SF

***TOTAL CONDITIONED SQUARE FOOTAGE = +/- 4,509 SF

AREA TYPE

- CONDITIONED
- COVERED PATIO
- GARAGE

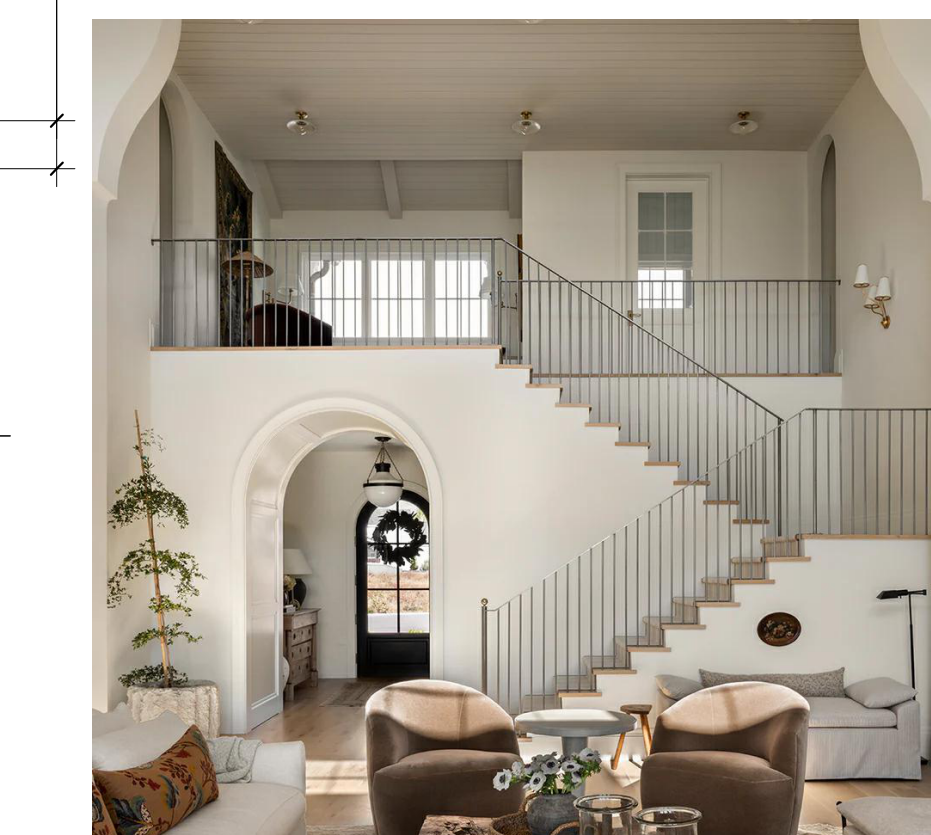


GC TO PROVIDE DRAIN BOX LOCATION AND DRAIN IN SLAB FOR TUB. PROVIDE LOCATION FOR THE FILLER. COORDINATE BY OWNER FOR FINAL TUB SELECTION AND TUB FILLER FOR DESIGN/INSTALLATION.

PROVIDE LINEAR FLOOR DRAIN SLOPE FLOORING AS REQUIRED TO DRAIN.

#FIX1 NOTE: WINDOW(S) ABOVE NOT SHOWN IN PLAN. WINDOW TAG NUMBER PROVIDED AS REFERENCE. GC SHALL REFER TO ELEVATIONS AND WINDOW SCHEDULE FOR SIZE AND CONFIGURATION OF WINDOW(S), AND COORDINATE FINAL WINDOW SIZE WITH WINDOWS BELOW & MANUFACTURE.

1 CONSTRUCTION PLAN AT GROUND LEVEL
 1/4" = 1'-0"



LIGHTING SYMBOL LEGEND

NOTE: ALL EXTERIOR LIGHTING FIXTURES SHALL BE WEATHERPROOF AND RATED FOR OUTDOOR WET CONDITIONS. CONTRACTOR TO ENSURE FIXTURES ARE TESTED, UL CERTIFIED FOR OUTDOOR USE. ALL CODES ARE MET FOR ELECTRICAL FIXTURES AND INSTALLATION

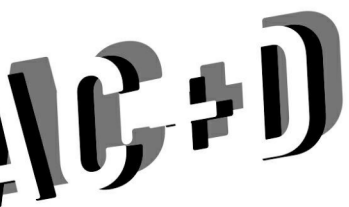
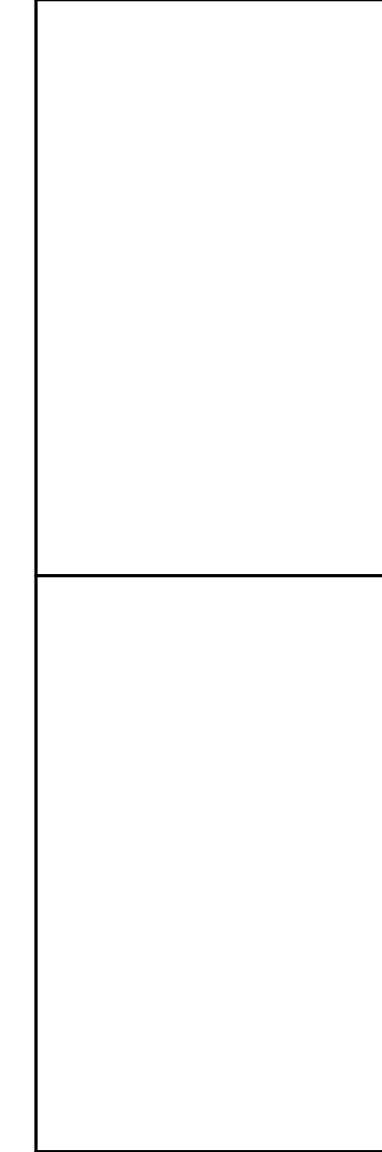
	4" RECESSED CAN		HANGING LIGHT FIXTURE		SURFACE MOUNTED LED FIXTURE		SMOKE / CO2 DETECTOR		CEILING FAN
	2" RECESSED CAN		WALL MOUNTED LIGHT FIXTURE		SURFACE MOUNTED SIRO FIXTURE		STRIP LED		EXHAUST FAN
	J BOX		PATH WAY LIGHTING		PENDANT		EXHAUST FAN		SURFACE MOUNTED LINEAR FIXTURE

ABBREVIATIONS: **MIR** = LED MIRROR **UCL** = UNDER CABINET OR UNDER COUNTER LIGHTING **UIL** = UNDER ISLAND LIGHTING **CLG** = CEILING EMBEDDED 2" CHANNEL LED **WTR** = WET RATED
USL = UNDER SEAT LIGHT **DIR** = DIRECTIONAL **SLS** = STRIP LED IN SHELF **PLC** = PICTURE LIGHT **M** = MOTION SENSOR CONTROLLED

GENERAL PLAN NOTES

- ALL DIMENSIONS ARE TO FINISH FACE OF EXTERIOR WALL OR TO FACE OF GYPSUM BOARD, UNO.
- TYPICAL WALLS NOTES:
 A. TYPICAL EXTERIOR GROUND LEVEL WALLS ARE 2X6 FRAMING, UNO.
 B. TYPICAL INTERIOR WALLS ARE 2X4 FRAMING, UNO.
 C. PLUMBING WALLS ARE 2X6 FRAMING, UNO.
 D. ALL WALLS CONTAINING POCKET DOORS AT TO BE 2X6 FRAMING, UNO.
 E. ALL BLOCKING TO BE 2X12.
- DOORS HAVE 4" JAMB OR ARE CENTERED IN ROOM / OPENING, UNO.
 CABINETS & APPLIANCES INDICATED ARE REPRESENTATIVE OF WHAT IS TO BE INSTALLED.
 REFER TO FINAL SELECTIONS FOR EXACT DIMENSIONING AND INSTALLATION REQUIREMENTS.
 OWNER IS RESPONSIBLE FOR FINAL FINISH & PRODUCT SELECTION.
 COORDINATE AND FIELD VERIFY ROUGH OPENINGS, FRAMING, AND CONNECTIONS FOR CABINETS AND APPLIANCES BEFORE FABRICATION AND INSTALLATION.
 COORDINATE AND FIELD VERIFY LOCATIONS FOR LIGHTING FIXTURES, FANS, ELECTRICAL OUTLETS & SWITCHES, MECHANICAL GRILLES, AND OTHER WALL & CEILING MOUNTED APPARATUS BEFORE INSTALLATION.
- CEILING HEIGHT IS 10'-0" AFF ON GROUND LEVEL, 9'-0" AFF ON L2.
- INTERMEDIATE FLOOR PLATES ARE 1'-6" UNLESS OTHERWISE NOTED.
- LIGHT FIXTURES SHOWN ARE GENERIC. REFER TO FINAL SELECTIONS FOR EXACT DIMENSIONING AND INSTALLATION REQUIREMENTS. OWNER IS RESPONSIBLE FOR FINAL FIXTURE & PRODUCT SELECTION.
- NOT ALL CEILING MOUNTED ELEMENTS ARE SHOWN.
- ALL CLOSETS TO HAVE MOTION SENSOR SWITCHES INSIDE OF CLOSET.
- ALL PATHWAY LIGHTING TO BE CONNECTED TO DAYLIGHT SENSORS.
- DOOR AND WINDOW SIZES ARE REPRESENTED IN NOMINAL INCHES ON TAGS AND SCHEDULES.
 GENERAL CONTRACTOR AND MANUFACTURER SHALL COORDINATE FINAL SIZES ACCORDINGLY.
 ROUGH OPENING SIZES SHALL BE DETERMINED AND COORDINATED BY GENERAL CONTRACTOR AND ALL APPLICABLE TRADE CONTRACTORS. NOTIFY DESIGNER IMMEDIATELY OF CONFLICTS.

CITY OF DALLAS BATCH STAMP



ANTHONY CARDEN + DESIGN
 https://www.acardendesign.com/

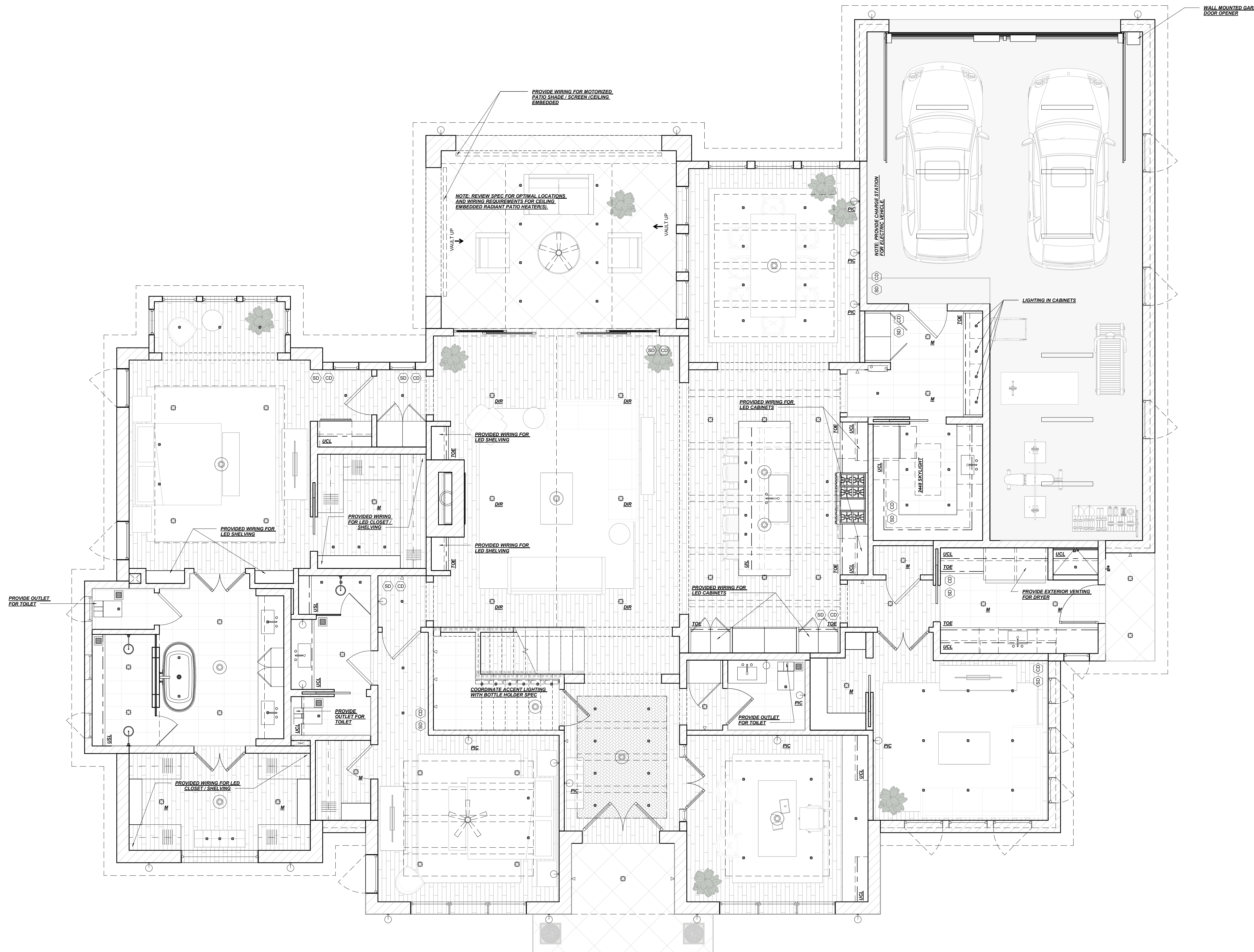
PRIMARY CONTACT:
 ANTHONY CARDEN
 305.878.1602
 anthony@acardendesign.com

SECONDARY CONTACT:
 LANDON BRADSHAW
 469.955.1001
 landon@acardendesign.com

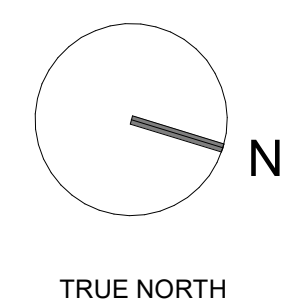


PROJECT DEVELOPER:
 SEVEN FIFTEEN CUSTOM HOMES

PRIMARY CONTACT:
 KRISTIAN ROBINSON
 214.886.1770
 Kristian.Robinson@sevenfifteeninvest.com



1 LIGHTING PLAN AT GROUND LEVEL
 1/4" = 1'-0"



2026-04-22 14911 LACEHAVEN DRIVE PERMIT DOCUMENTS

NOTIFY PROJECT DESIGN TEAM AND GENERAL CONTRACTOR IN WRITING OF ALL COMPLETES IN DOCUMENTATION PRIOR TO CONTINUING WORK.

LIGHTING PLAN AT GROUND LEVEL

A-2

PRINT SCALE: 3/0x42

14911 LACEHAVEN DRIVE

14911 LACEHAVEN DRIVE, DALLAS TEXAS 75248
 DALLAS COUNTY

+ BLOCK: J18188
 + LOT: 11

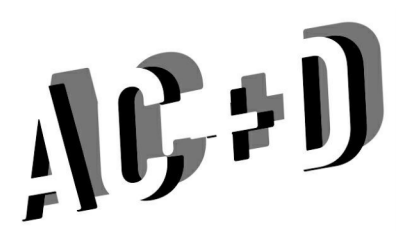
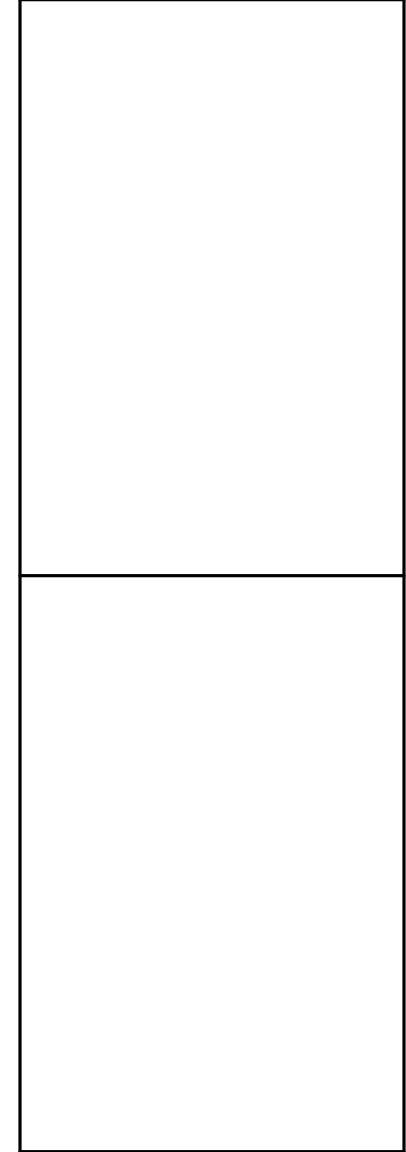
WALL TYPE HATCH LEGEND

- EXTERIOR WALLS:**
- EXTERIOR: 6" STUD WITH BRICK MASONRY BOTH SIDES
 - EXTERIOR: 6" STUD WITH BRICK MASONRY WITH 5/8" GYP (INTERIOR) FINISH OTHER SIDE
 - EXTERIOR: 6" STUD WITH BRICK MASONRY SIDING ABOVE WITH 5/8" GYP (INTERIOR)
 - EXTERIOR 44" BRICK MASONRY WANSBOT, CAST STONE WATER TABLE OVER MASONRY
 - VERTICAL BOARD & BATTEN SIDING ABOVE MASONRY
 - INTERIOR FINISH 5/8" GYP BD
 - EXTERIOR: 6" STUD WITH VERTICAL SIDING WITH 5/8" GYP (INTERIOR)
 - EXTERIOR VERTICAL BOARD & BATTEN SIDING
 - INTERIOR FINISH 5/8" GYP BD

11A7

- INTERIOR WALLS:**
- INTERIOR: 6" STUD WITH STONE MASONRY WALL- REF. TO ELEVATIONS FOR STYLE
 - STONE MASONRY FRAMED WALL ONE SIDE WITH 5/8" GYP FINISH OTHER SIDE
 - (FIREPLACE) 6" STUD WITH STONE MASONRY ONE SIDE OR SOLID MASONRY FIREPLACE.
 - INTERIOR: DOUBLE 8" STUD WITH 5/8" GYP
 - INTERIOR: 6" STUD WITH 5/8" GYP
 - INTERIOR: 4" STUD WITH 5/8" GYP

CITY OF DALLAS BATCH STAMP



ANTHONY CARDEN + DESIGN
 https://www.acardendesign.com/
 PRIMARY CONTACT:
 ANTHONY CARDEN
 305.878.1802
 anthony@acardendesign.com
 SECONDARY CONTACT:
 LANDON BRADSHAW
 469.955.1001
 landon@acardendesign.com

SEVEN FIFTEEN
 CUSTOM HOMES

PROJECT DEVELOPER:
 SEVEN FIFTEEN CUSTOM HOMES

PRIMARY CONTACT:
 KRISTIAN ROBINSON
 214.886.1770
 Kristian.Robinson
 krob@sevenfifteeninvest.com

GENERAL PLAN NOTES

- ALL DIMENSIONS ARE TO FINISH FACE OF EXTERIOR WALL OR TO FACE OF GYPSUM BOARD, UNO.
- TYPICAL WALLS NOTES:
 - A. TYPICAL EXTERIOR GROUND LEVEL WALLS ARE 2X6 FRAMING, UNO.
 - B. TYPICAL INTERIOR WALLS ARE 2X4 FRAMING, UNO
 - C. PLUMBING WALLS ARE 2X6 FRAMING, UNO.
 - D. ALL WALLS CONTAINING POCKET DOORS AT TO BE 2X6 FRAMING, UNO.
 - E. ALL BLOCKING TO BE 2X12
- DOORS HAVE 4" JAMB OR ARE CENTERED IN ROOM / OPENING, UNO.
- CABINETS & APPLIANCES INDICATED ARE REPRESENTATIVE OF WHAT IS TO BE INSTALLED. REFER TO FINAL SELECTIONS FOR EXACT DIMENSIONING AND INSTALLATION REQUIREMENTS. OWNER IS RESPONSIBLE FOR FINAL FINISH & PRODUCT SELECTION.
- COORDINATE AND FIELD VERIFY ROUGH OPENINGS, FRAMING, AND CONNECTIONS FOR CABINETS AND APPLIANCES BEFORE FABRICATION AND INSTALLATION.
- COORDINATE AND FIELD VERIFY LOCATIONS FOR LIGHTING FIXTURES, FANS, ELECTRICAL OUTLETS & SWITCHES, MECHANICAL GRILLES, AND OTHER WALL & CEILING MOUNTED APPARATUS BEFORE INSTALLATION.
- CEILING HEIGHT IS 10'-0" AFF ON GROUND LEVEL, 9'-0" AFF ON L2.
- INTERMEDIATE FLOOR PLATES ARE 1'-6" UNLESS OTHERWISE NOTED.
- LIGHT FIXTURES SHOWN ARE GENERIC. REFER TO FINAL SELECTIONS FOR EXACT DIMENSIONING AND INSTALLATION REQUIREMENTS. OWNER IS RESPONSIBLE FOR FINAL FIXTURE & PRODUCT SELECTION.
- NOT ALL CEILING MOUNTED ELEMENTS ARE SHOWN.
- ALL CLOSETS TO HAVE MOTION SENSOR SWITCHES INSIDE OF CLOSET.
- ALL PATHWAY LIGHTING TO BE CONNECTED TO DAYLIGHT SENSORS.
- DOOR AND WINDOW SIZES ARE REPRESENTED IN NOMINAL INCHES ON TAGS AND SCHEDULES. GENERAL CONTRACTOR AND MANUFACTURER SHALL COORDINATE FINAL SIZES ACCORDINGLY. ROUGH OPENING SIZES SHALL BE DETERMINED AND COORDINATED BY GENERAL CONTRACTOR AND ALL APPLICABLE TRADE CONTRACTORS. NOTIFY DESIGNER IMMEDIATELY OF CONFLICTS.

LOT COVERAGE & SQUARE FOOTAGE

+ ALLOWABLE LOT COVERAGE: TOTAL LOT = 11,688 SF + 45 = **5,259.60 SF**
 + TOTAL LOT COVERAGE: 4,769.22 SF = 40.80%

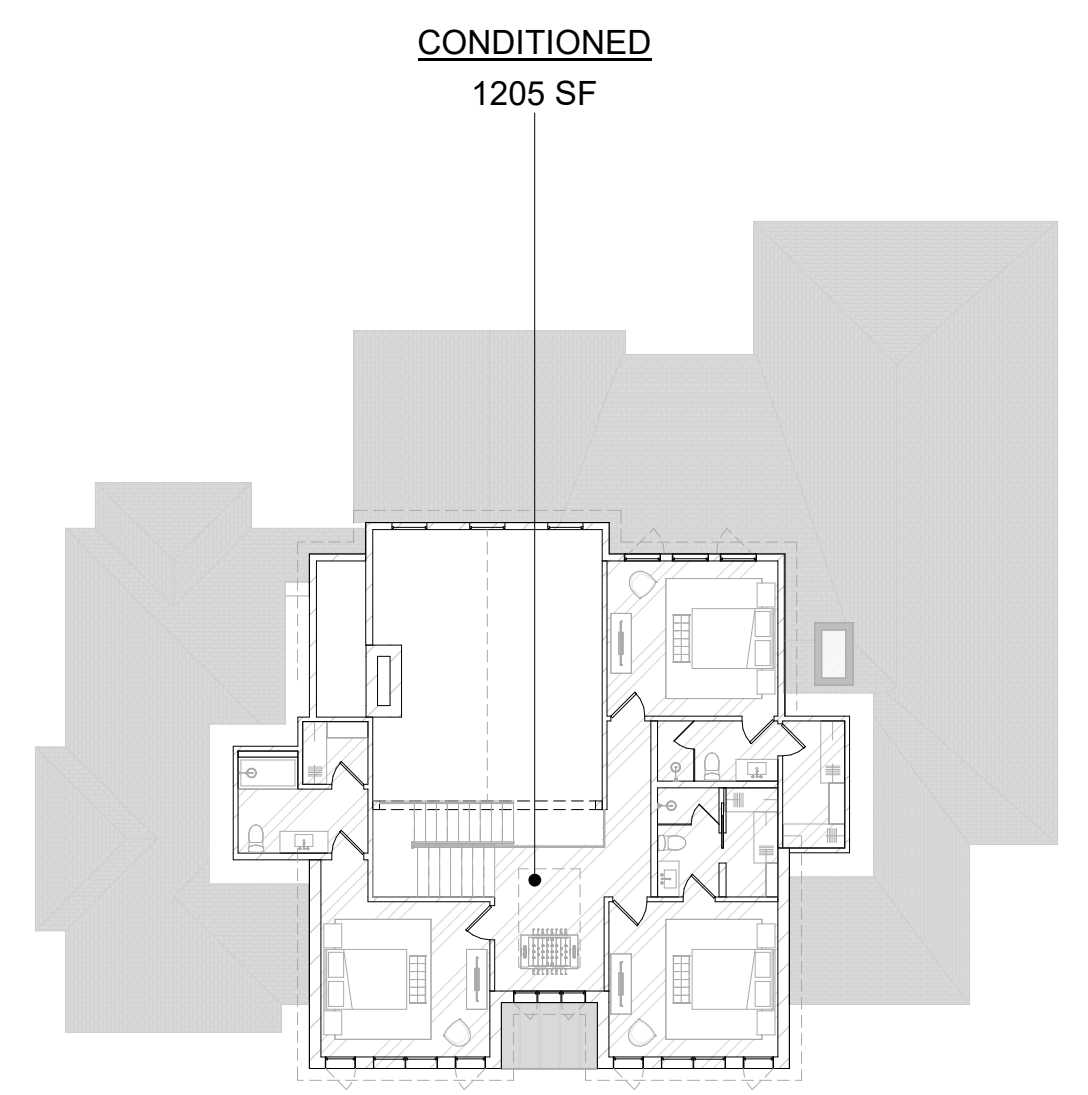
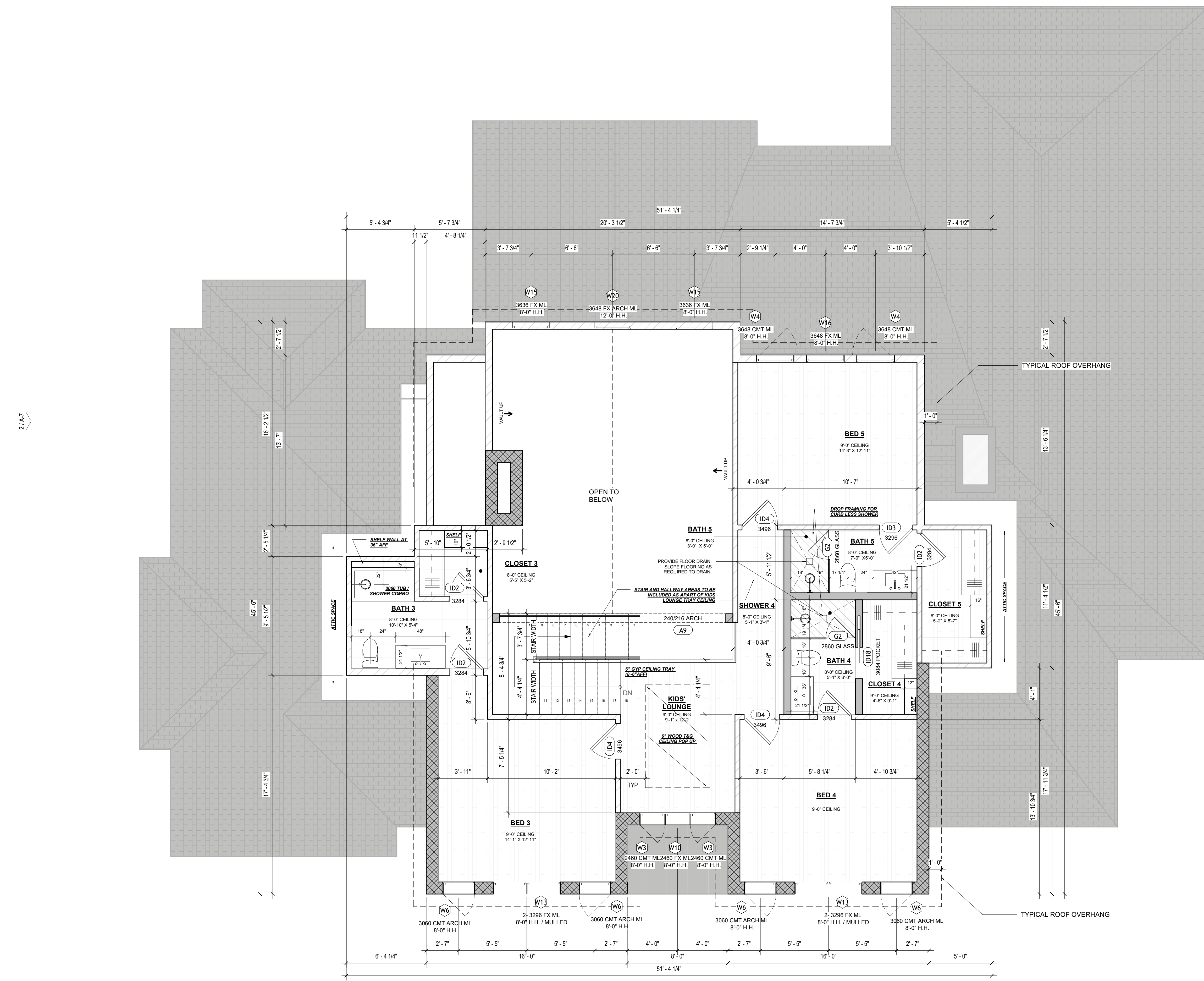
GROUND LEVEL
 + CONDITIONED SPACE AT GROUND LEVEL = 3,304 SF
 + COVERED PATIO = 338 SF
 + GARAGE = 744 SF
 TOTAL FOOT PRINT= 4,386 SF

+ CONDITIONED SPACE AT SECOND LEVEL = 1,205 SF
 TOTAL: 1,205 SF

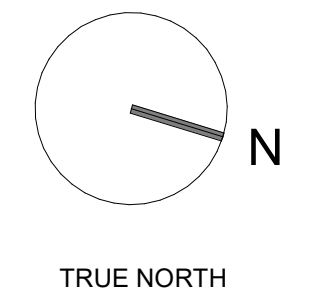
****TOTAL CONDITIONED SQUARE FOOTAGE = +/- 4,509 SF**

AREA TYPE

CONDITIONED



1 CONSTRUCTION PLAN AT SECOND LEVEL
 1/4" = 1'-0"



2026-04-22 14911 LACEHAVEN DRIVE PERMIT DOCUMENTS

NOTIFY PROJECT DESIGN TEAM AND GENERAL CONTRACTOR IN WRITING OF ALL COMPLETES IN DOCUMENTATION PRIOR TO CONTINUING WORK.

CONSTRUCTION PLAN AT SECOND LEVEL

A-3

PRINT SCALE: 3/042

14911 LACEHAVEN DRIVE

14911 LACEHAVEN DRIVE, DALLAS TEXAS 75248
 DALLAS COUNTY

+ BLOCK: J18188
 + LOT: 11

LIGHTING SYMBOL LEGEND

NOTE: ALL EXTERIOR LIGHTING FIXTURES SHALL BE WEATHERPROOF AND RATED FOR OUTDOOR WET CONDITIONS. CONTRACTOR TO ENSURE FIXTURES ARE TESTED, UL CERTIFIED FOR OUTDOOR USE. ALL CODES ARE MET FOR ELECTRICAL FIXTURES AND INSTALLATION

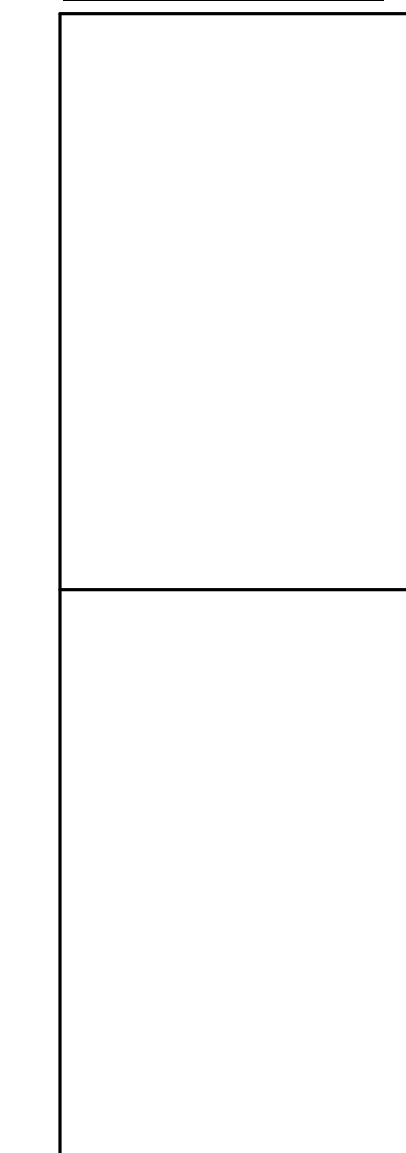
□	4" RECESSED CAN	⊙	HANGING LIGHT FIXTURE	○	SURFACE MOUNTED LED FIXTURE	☼	SMOKE / CO2 DETECTOR	☼	CEILING FAN
•	2" RECESSED CAN	⊙	WALL MOUNTED LIGHT FIXTURE	●	SURFACE MOUNTED SILO FIXTURE	---	STRIP LED		
⌈	J BOX	◁	PATH WAY LIGHTING	⊕	PENDANT	■	EXHAUST FAN	▬	SURFACE MOUNTED LINEAR FIXTURE

ABBREVIATIONS: **MIR** = LED MIRROR **UCL** = UNDER CABINET OR UNDER COUNTER LIGHTING **UIL** = UNDER ISLAND LIGHTING **CLG** = CEILING EMBEDDED 2" CHANNEL LED **WR** = WET RATED
USL = UNDER SEAT LIGHT **DIR** = DIRECTIONAL **SLS** = STRIP LED IN SHELF **PLC** = PICTURE LIGHT **M** = MOTION SENSOR CONTROLLED

GENERAL PLAN NOTES

- ALL DIMENSIONS ARE TO FINISH FACE OF EXTERIOR WALL OR TO FACE OF GYPSUM BOARD, UNO.
- TYPICAL WALLS NOTES:
 - TYPICAL EXTERIOR GROUND LEVEL WALLS ARE 2X6 FRAMING, UNO.
 - TYPICAL INTERIOR WALLS ARE 2X4 FRAMING, UNO.
 - PLUMBING WALLS ARE 2X6 FRAMING, UNO.
 - ALL WALLS CONTAINING POCKET DOORS AT TO BE 2X6 FRAMING, UNO.
 - ALL BLOCKING TO BE 2X12.
- DOORS HAVE 4" JAMB OR ARE CENTERED IN ROOM / OPENING, UNO. CABINETS & APPLIANCES INDICATED ARE REPRESENTATIVE OF WHAT IS TO BE INSTALLED. REFER TO FINAL SELECTIONS FOR EXACT DIMENSIONING AND INSTALLATION REQUIREMENTS. OWNER IS RESPONSIBLE FOR FINAL FINISH & PRODUCT SELECTION.
- COORDINATE AND FIELD VERIFY ROUGH OPENINGS, FRAMING, AND CONNECTIONS FOR CABINETS AND APPLIANCES BEFORE FABRICATION AND INSTALLATION.
- COORDINATE AND FIELD VERIFY LOCATIONS FOR LIGHTING FIXTURES, FANS, ELECTRICAL OUTLETS & SWITCHES, MECHANICAL GRILLES, AND OTHER WALL & CEILING MOUNTED APPARATUS BEFORE INSTALLATION.
- CEILING HEIGHT IS 10'-0" AFF ON GROUND LEVEL, 9'-0" AFF ON L2.
- INTERMEDIATE FLOOR PLATES ARE 1'-0" UNLESS OTHERWISE NOTED.
- LIGHT FIXTURES SHOWN ARE GENERIC. REFER TO FINAL SELECTIONS FOR EXACT DIMENSIONING AND INSTALLATION REQUIREMENTS. OWNER IS RESPONSIBLE FOR FINAL FIXTURE & PRODUCT SELECTION.
- NOT ALL CEILING MOUNTED ELEMENTS ARE SHOWN.
- ALL CLOSETS TO HAVE MOTION SENSOR SWITCHES INSIDE OF CLOSET.
- ALL PATHWAY LIGHTING TO BE CONNECTED TO DAYLIGHT SENSORS.
- DOOR AND WINDOW SIZES ARE REPRESENTED IN NOMINAL INCHES ON TAGS AND SCHEDULES. GENERAL CONTRACTOR AND MANUFACTURER SHALL COORDINATE FINAL SIZES ACCORDINGLY. ROUGH OPENING SIZES SHALL BE DETERMINED AND COORDINATED BY GENERAL CONTRACTOR AND ALL APPLICABLE TRADE CONTRACTORS. NOTIFY DESIGNER IMMEDIATELY OF CONFLICTS.

CITY OF DALLAS BATCH STAMP



ANTHONY CARDEN + DESIGN
 https://www.acardendesign.com/

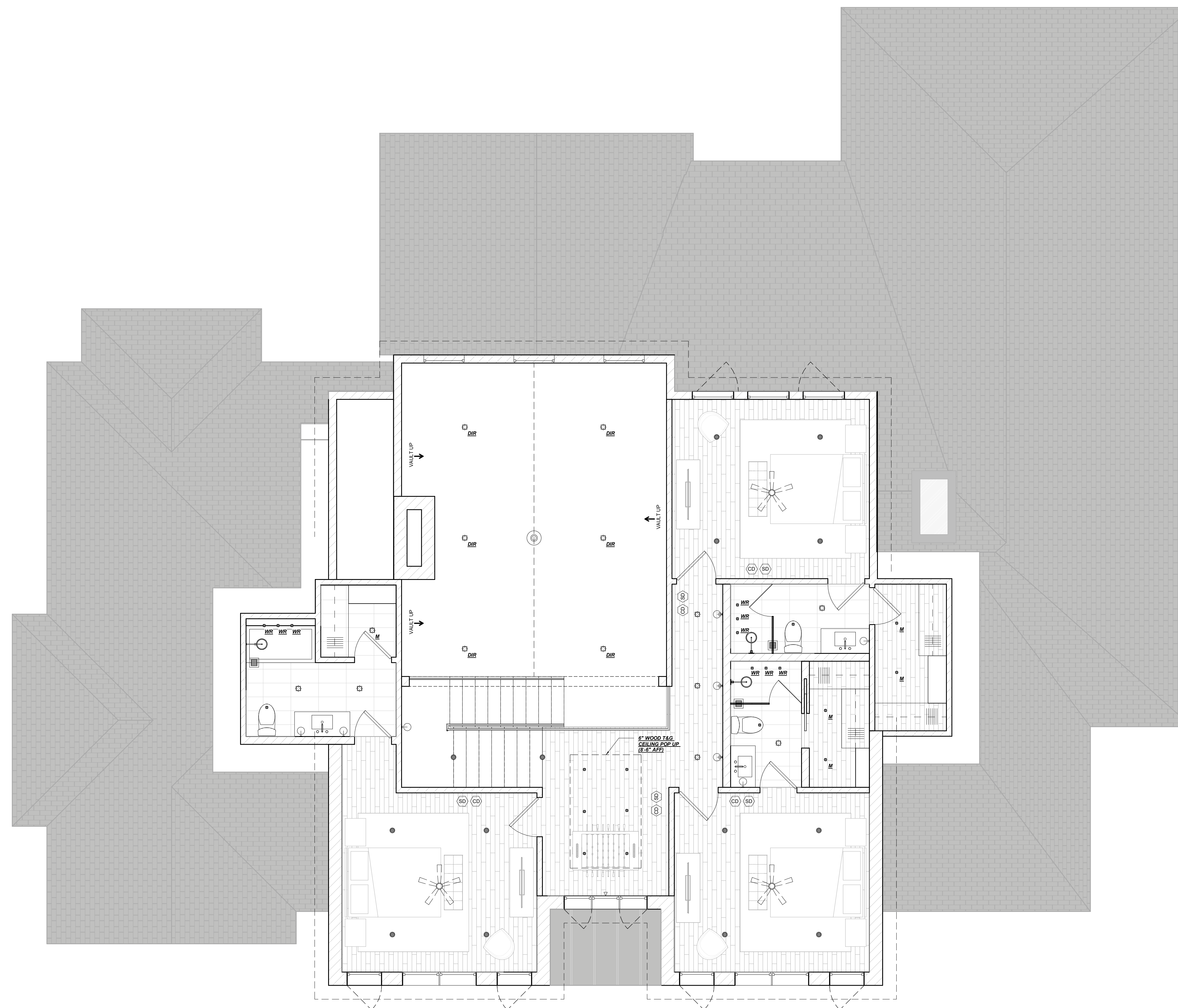
PRIMARY CONTACT:
 ANTHONY CARDEN
 305.878.1602
 anthony@acardendesign.com

SECONDARY CONTACT:
 LANDON BRADSHAW
 469.955.1001
 landon@acardendesign.com

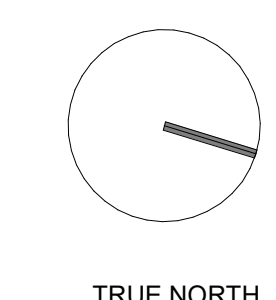


PROJECT DEVELOPER:
 SEVEN FIFTEEN CUSTOM HOMES

PRIMARY CONTACT:
 KRISTIAN ROBINSON
 214.886.1770
 Kristian.Robinson@sevenfifteeninvest.com



1 LIGHTING PLAN AT SECOND LEVEL
 1/4" = 1'-0"



2026-04-22 14911 LACEHAVEN DRIVE PERMIT DOCUMENTS

NOTIFY PROJECT DESIGN TEAM AND GENERAL CONTRACTOR IN WRITING OF ALL COMPLETES IN DOCUMENTATION PRIOR TO CONTINUING WORK.

LIGHTING PLAN AT SECOND LEVEL

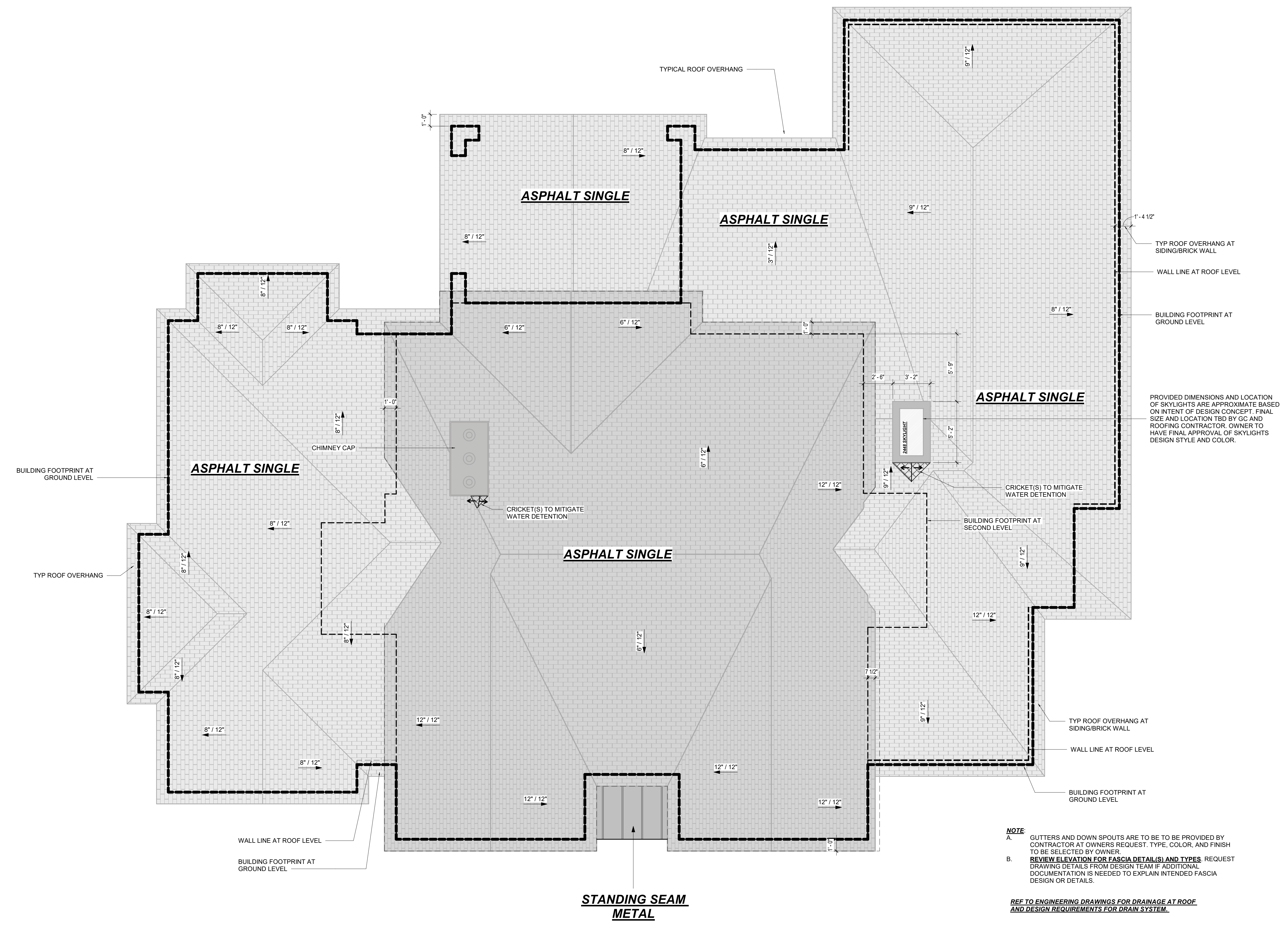
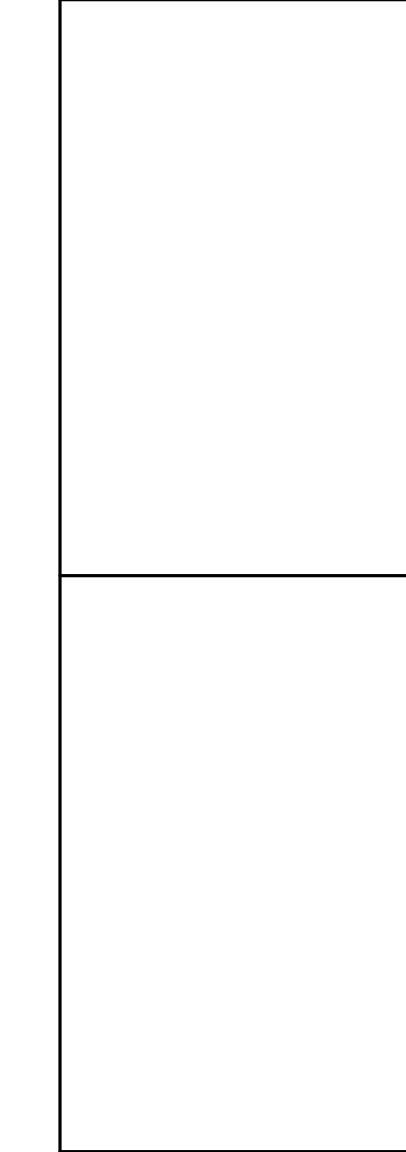
A-4

PRINT SCALE: 3/32" = 1'-0"

14911 LACEHAVEN DRIVE

14911 LACEHAVEN DRIVE, DALLAS TEXAS 75248
 DALLAS COUNTY

+ BLOCK: J18188
 + LOT: 11

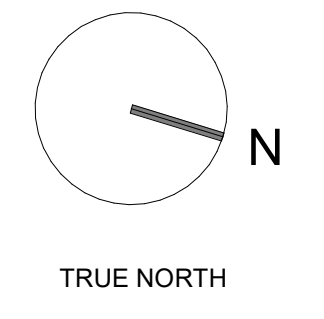


1'-4 1/2"
TYP ROOF OVERHANG AT
SIDING/BRICK WALL
WALL LINE AT ROOF LEVEL
BUILDING FOOTPRINT AT
GROUND LEVEL

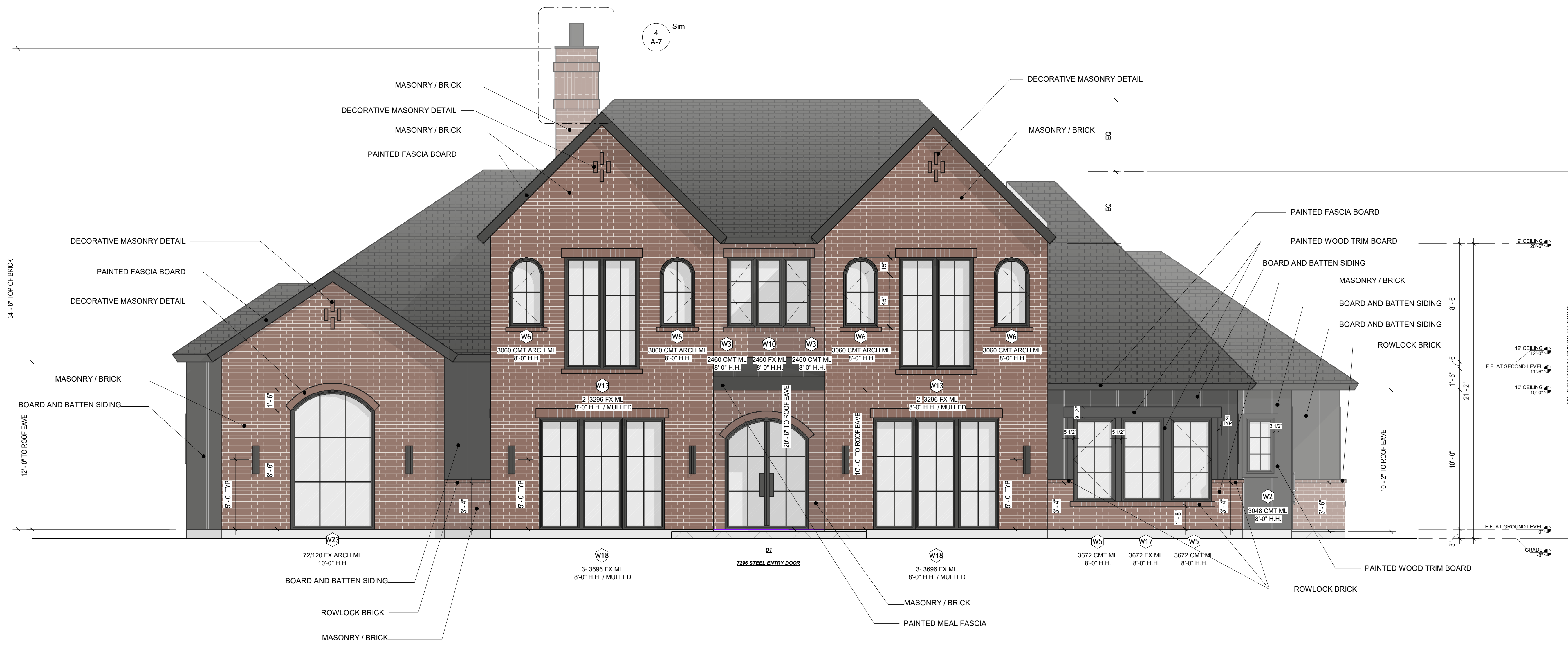
PROVIDED DIMENSIONS AND LOCATION
OF SKYLIGHTS ARE APPROXIMATE BASED
ON INTENT OF DESIGN CONCEPT, FINAL
SIZE AND LOCATION TBD BY GC AND
ROOFING CONTRACTOR. OWNER TO
HAVE FINAL APPROVAL OF SKYLIGHTS
DESIGN STYLE AND COLOR.

NOTE
A. GUTTERS AND DOWN SPOUTS ARE TO BE PROVIDED BY CONTRACTOR AT OWNERS REQUEST. TYPE, COLOR, AND FINISH TO BE SELECTED BY OWNER.
B. REVIEW ELEVATION FOR FASCIA DETAIL(S) AND TYPES. REQUEST DRAWING DETAILS FROM DESIGN TEAM IF ADDITIONAL DOCUMENTATION IS NEEDED TO EXPLAIN INTENDED FASCIA DESIGN OR DETAILS.
REF TO ENGINEERING DRAWINGS FOR DRAINAGE AT ROOF AND DESIGN REQUIREMENTS FOR DRAIN SYSTEM.

1 ROOF PLAN
1/4" = 1'-0"



CITY OF DALLAS BATCH STAMP

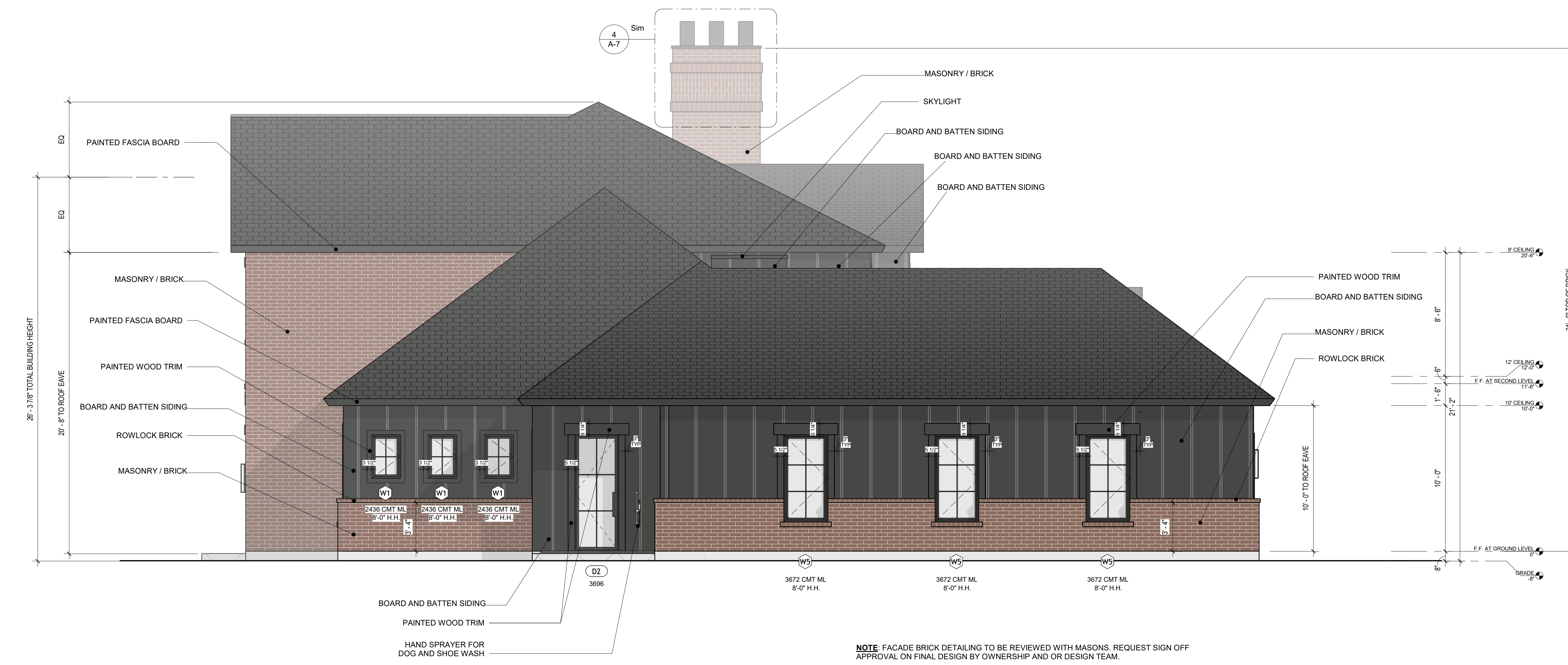


NOTE: FACADE BRICK DETAILING TO BE REVIEWED WITH MASONS. REQUEST SIGN OFF APPROVAL ON FINAL DESIGN BY OWNERSHIP AND OR DESIGN TEAM.

1 ELEVATION AT FRONT FACADE
1/4" = 1'-0"

DOOR SCHEDULE					
MARK	NOM WIDTH	NOM HEIGHT	COUNT	DESCRIPTION	Comments
ARCHED OPENING					
A1	34 in	96 in	1	REFER ARCH STYLE AND DETAILS W/ OWNER	
A2	36 in	96 in	4	REFER ARCH STYLE AND DETAILS W/ OWNER	
A3	72 in	96 in	1	REFER ARCH STYLE AND DETAILS W/ OWNER	
A4	104 in	96 in	1	REFER ARCH STYLE AND DETAILS W/ OWNER	
A5	108 in	120 in	1	REFER ARCH STYLE AND DETAILS W/ OWNER	
A6	120 in	108 in	1	REFER ARCH STYLE AND DETAILS W/ OWNER	EXTERIOR PATIO
A7	192 in	108 in	1	REFER ARCH STYLE AND DETAILS W/ OWNER	EXTERIOR PATIO
A8	216 in	108 in	1	REFER ARCH STYLE AND DETAILS W/ OWNER	
A9	216 in	240 in	1	REFER ARCH STYLE AND DETAILS W/ OWNER	
EXTERIOR					
D1	72 in	96 in	1	ARCHED DBL SWING (GLASS)	STEEL MULTI-LIGHT ENTRY DOOR
D2	36 in	96 in	1	SWING (GLASS)	MULTI-LITE, TEMPERED
D3	192 in	108 in	1	SLIDER - 4 PANEL (CENTER PANELS OPERABLE)	MULTI-LITE, TEMPERED
D4	216 in	96 in	1	BLACK GLASS GARAGE DOOR	
GARAGE/MECHANICAL					
GM1	36 in	96 in	1	SOLID CORE SWING	GARAGE ENTRY DOOR
GLASS					
G1	28 in	84 in	2	TEMPERED GLASS	SHOWER DOOR
G2	28 in	60 in	2	TEMPERED GLASS	SHOWER DOOR
INTERIOR					
ID1	30 in	96 in	1	SOLID CORE SWING	
ID2	32 in	84 in	4	SOLID CORE SWING	
ID3	32 in	96 in	4	SOLID CORE SWING	
ID4	34 in	96 in	3	SOLID CORE SWING	
ID5	34 in	96 in	2	SOLID CORE SWING	
ID6	36 in	96 in	2	SOLID CORE SWING	
ID7	30 in	96 in	1	SOLID CORE POCKET	
ID8	32 in	96 in	2	SOLID CORE POCKET	
ID9	34 in	96 in	2	SOLID CORE POCKET	
ID10	48 in	96 in	4	DBL SWING (GLASS)	MULTI-LITE, TEMPERED
ID18	30 in	84 in	1	SOLID CORE POCKET	

NOTE: ARCHED OPENINGS, EXTERIOR AND INTERIOR OPENINGS PROVIDED AS REFERENCE FOR SIZING FOR FRAMING CONDITIONS WITHIN SCHEDULE FORMAT. COORDINATE WITH OWNER FOR FINAL REQUIREMENTS AND SIZES



NOTE: FACADE BRICK DETAILING TO BE REVIEWED WITH MASONS. REQUEST SIGN OFF APPROVAL ON FINAL DESIGN BY OWNERSHIP AND OR DESIGN TEAM.

2 ELEVATION AT SIDE YARD
1/4" = 1'-0"

WINDOW SCHEDULE						
MARK	NOM WIDTH	NOM HEIGHT	SILL	HEAD	COUNT	Comments
CASEMENT (MULTI-LITE)						
W1	24 in	36 in	60 in	96 in	5	
W2	24 in	48 in	48 in	96 in	1	
W3	24 in	60 in	36 in	96 in	2	
W4	36 in	48 in	48 in	96 in	2	
W5	36 in	72 in	24 in	96 in	8	
CASEMENT ARCH (MULTI-LITE)						
W6	30 in	60 in	36 in	96 in	4	SPRING LINE @ 45"
FIXED						
W7	24 in	24 in	96 in	120 in	2	
FIXED (MULTI-LITE)						
W8	12 in	96 in	0 in	96 in	2	TEMPERED
W9	24 in	36 in	60 in	96 in	1	
W10	24 in	60 in	36 in	96 in	1	
W11	24 in	96 in	0 in	96 in	2	TEMPERED
W12	32 in	24 in	96 in	120 in	3	
W13	32 in	96 in	0 in	96 in	7	TEMPERED
W14	36 in	24 in	96 in	120 in	2	
W15	36 in	36 in	60 in	96 in	2	
W16	36 in	48 in	48 in	96 in	1	
W17	36 in	72 in	24 in	96 in	1	
W18	36 in	96 in	0 in	96 in	6	TEMPERED
FIXED ARCH (MULTI-LITE)						
W19	24 in	120 in	0 in	120 in	2	TEMPERED GLAZING, SPRING LINE 114"
W20	36 in	48 in	96 in	144 in	1	SPRING LINE @ 42"
W21	36 in	108 in	0 in	108 in	6	TEMPERED GLAZING, SPRING LINE 102"
W22	72 in	96 in	0 in	96 in	2	TEMPERED, SPRING LINE @ 66"
W23	72 in	120 in	0 in	120 in	1	TEMPERED, SPRING LINE @ 66"

2026-04-22 14911 LACEHAVEN DRIVE PERMIT DOCUMENTS

NOTIFY PROJECT DESIGN TEAM AND GENERAL CONTRACTOR IN WRITING OF ALL COMPLETE IN DOCUMENTATION PRIOR TO CONTINUING WORK.

ELEVATIONS

A-6

PRINT SCALE: 3/32" = 1'-0"

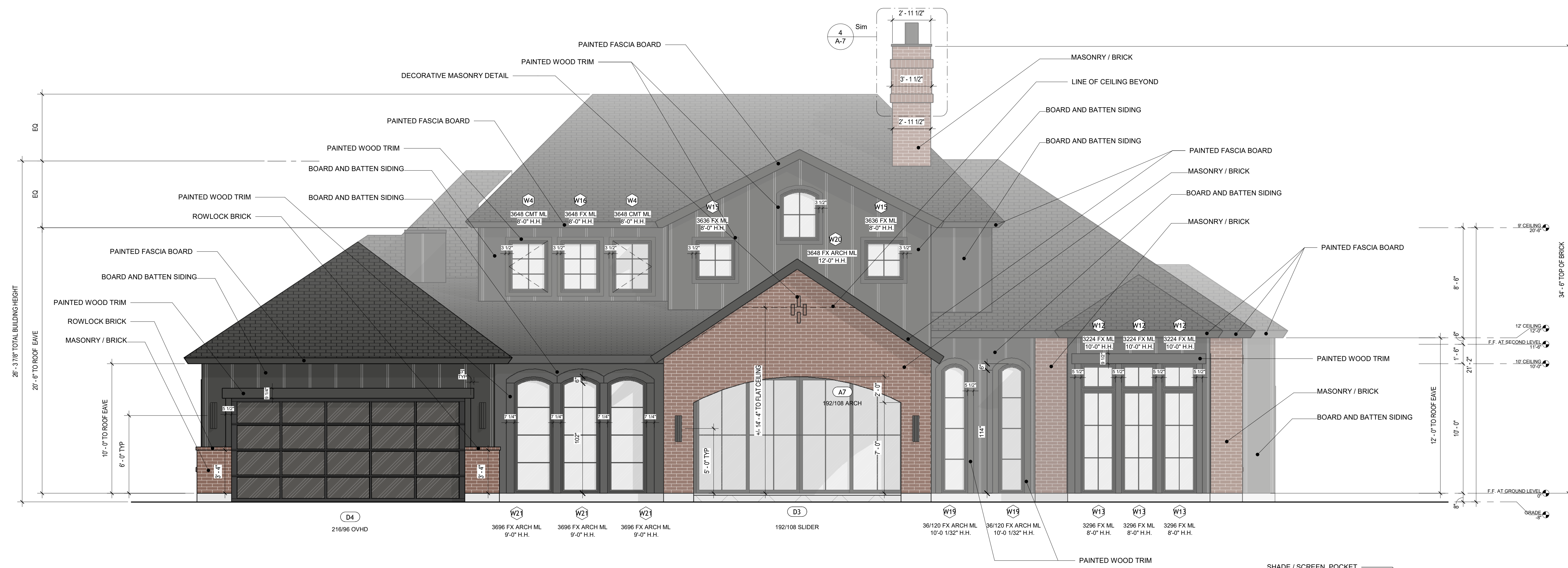
14911 LACEHAVEN DRIVE

+ BLOCK J18188

+ LOT: 11

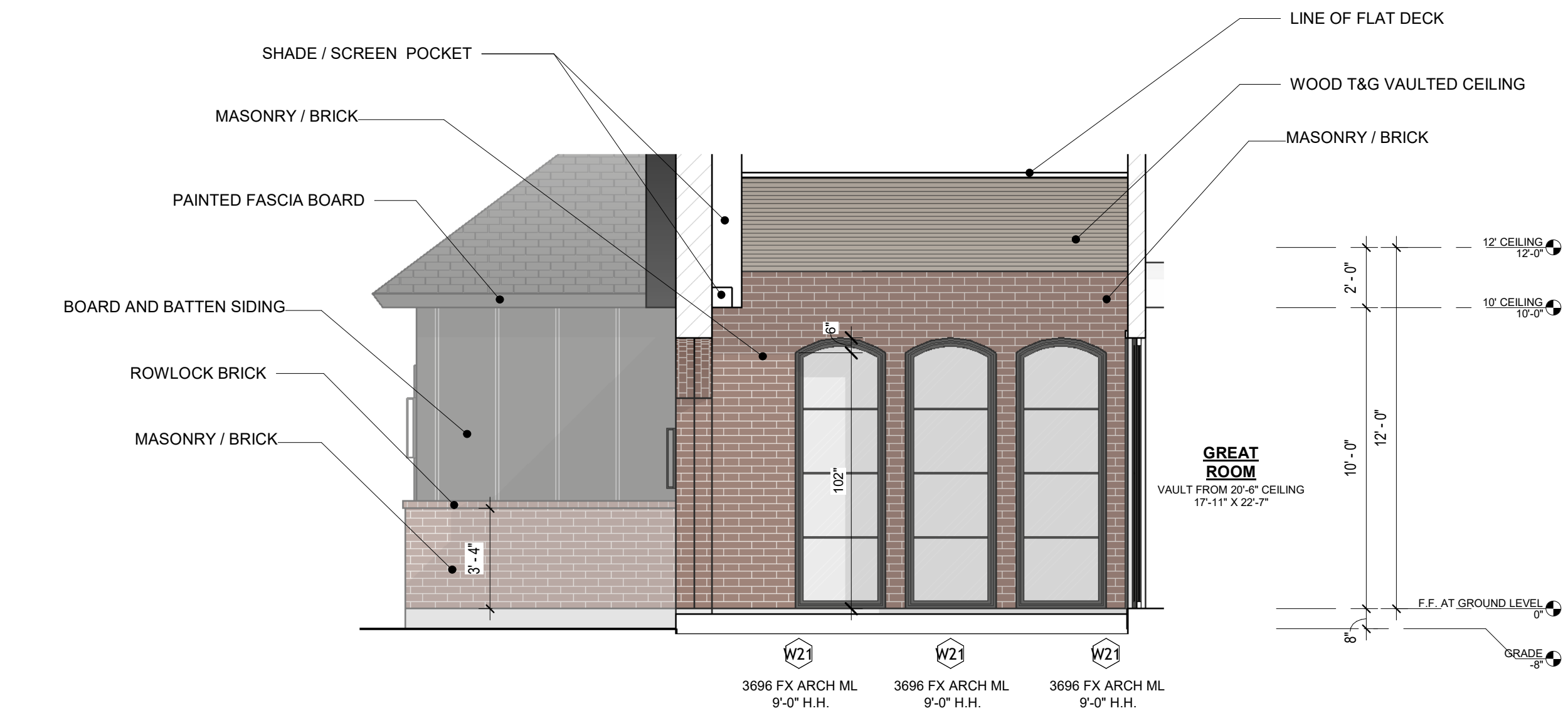
14811 LACEHAVEN DRIVE, DALLAS TEXAS 75248
DALLAS COUNTY

CITY OF DALLAS BATCH STAMP



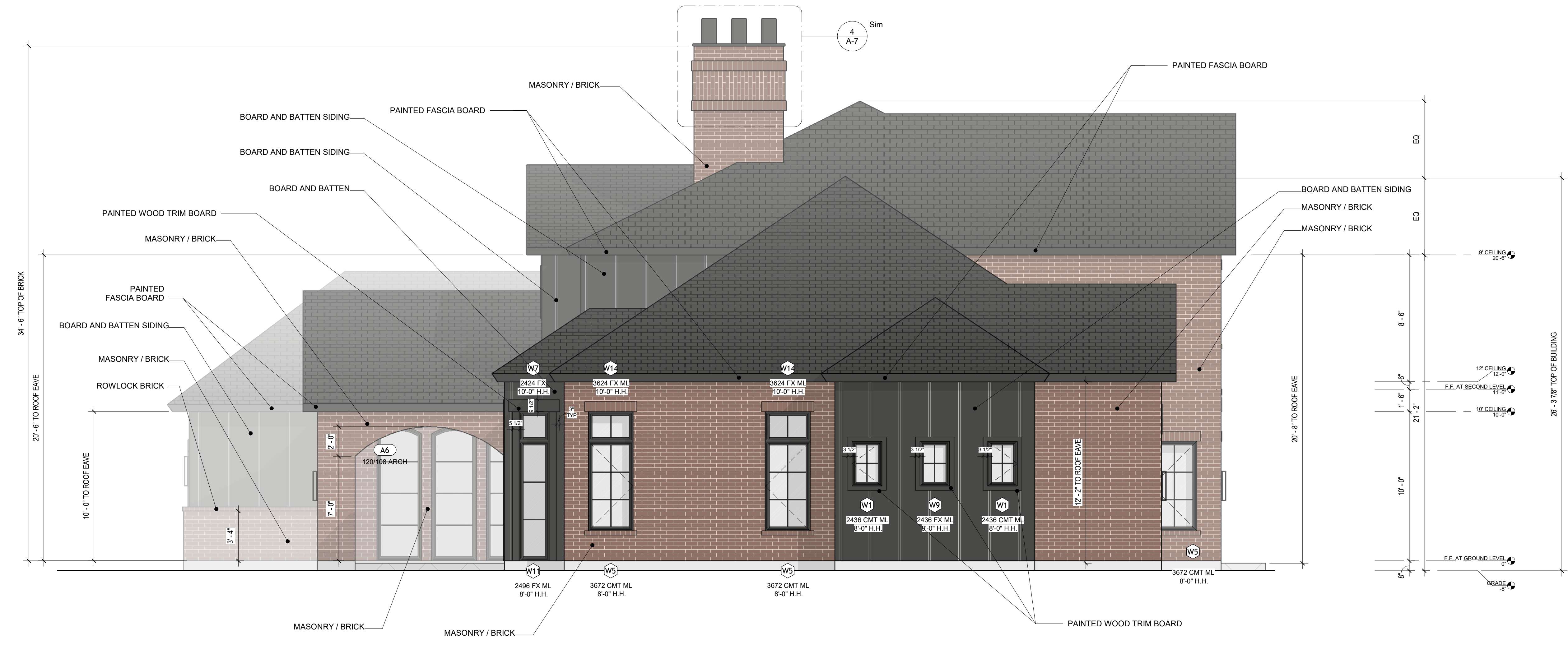
1 ELEVATION AT REAR
 1/4" = 1'-0"

NOTE: FACADE BRICK DETAILING TO BE REVIEWED WITH MASONS. REQUEST SIGN OFF APPROVAL ON FINAL DESIGN BY OWNERSHIP AND OR DESIGN TEAM.



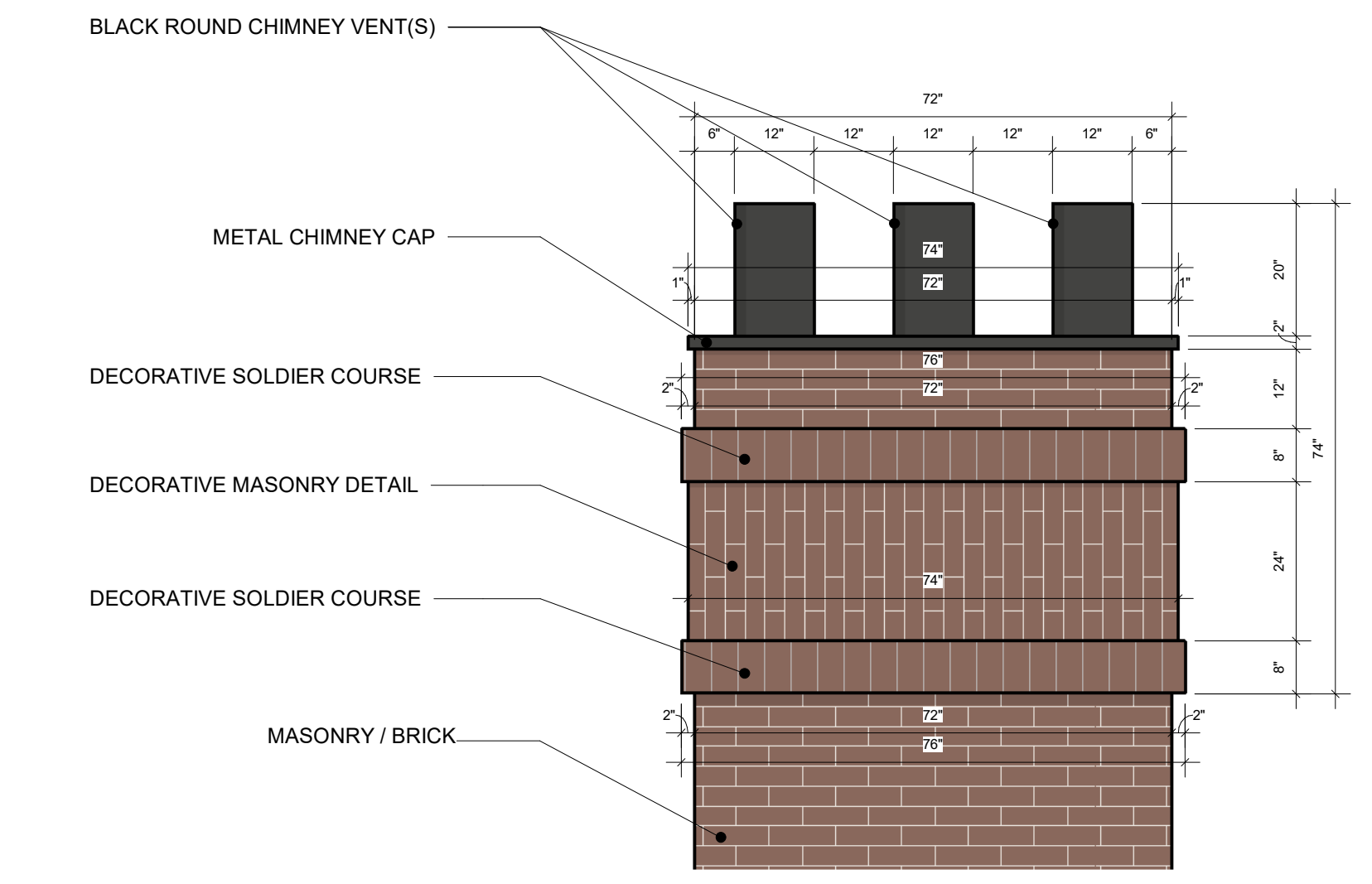
3 INSET ELEVATION AT DINING ROOM
 1/4" = 1'-0"

NOTE: FACADE BRICK DETAILING TO BE REVIEWED WITH MASONS. REQUEST SIGN OFF APPROVAL ON FINAL DESIGN BY OWNERSHIP AND OR DESIGN TEAM.



2 ELEVATION AT SIDE YARD (PRIMARY SUITE)
 1/4" = 1'-0"

NOTE: FACADE BRICK DETAILING TO BE REVIEWED WITH MASONS. REQUEST SIGN OFF APPROVAL ON FINAL DESIGN BY OWNERSHIP AND OR DESIGN TEAM.



4 ENLARGED CHIMNEY DETAIL
 1/2" = 1'-0"

NOTE: ALL DIMENSIONS ARE INTENDED TO PROVIDE DESIGN INTENT ONLY. REVIEW CONSTRUCTION DETAILS WITH MASONS AND REQUEST SIGN OFF APPROVAL ON FINAL DESIGN BY OWNERSHIP AND OR DESIGN TEAM.

14911 LACEHAVEN DRIVE

2026-04-22 14911 LACEHAVEN DRIVE PERMIT DOCUMENTS

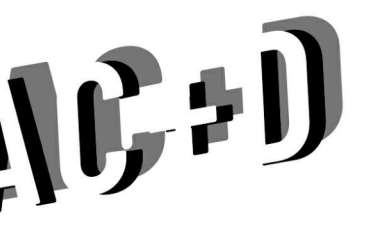
ELEVATIONS

A-7

PRINT SCALE: 3/042



CITY OF DALLAS BATCH STAMP



ANTHONY CARDEN + DESIGN
<https://www.acardendesign.com/>

PRIMARY CONTACT:
 ANTHONY CARDEN
 305.878.1802
 anthony@acardendesign.com

SECONDARY CONTACT:
 LANDON BRADSHAW
 469.955.1001
 landon@acardendesign.com



PROJECT DEVELOPER:
 SEVEN FIFTEEN CUSTOM HOMES

PRIMARY CONTACT:
 KRISTIAN ROBINSON
 214.886.1770
 Kristian.Robinson@sevenfifteeninvest.com

14911 LACEHAVEN DRIVE

+ BLOCK: J18188
 + LOT: 11

14911 LACEHAVEN DRIVE, DALLAS TEXAS 75248
 DALLAS COUNTY

2026-04-22 14911 LACEHAVEN DRIVE PERMIT DOCUMENTS

NOTIFY PROJECT DESIGN TEAM AND GENERAL CONTRACTOR IN WRITING OF ALL CORRECTIONS IN DOCUMENTATION PRIOR TO CONTINUING WORK.

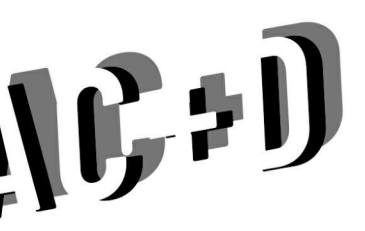
3D VIEWS

A-8

PRINT SCALE: 3/32" = 1'-0"



CITY OF DALLAS BATCH STAMP



ANTHONY CARDEN + DESIGN
<https://www.acardendesign.com/>

PRIMARY CONTACT:
 ANTHONY CARDEN
 305.878.1802
 anthony@acardendesign.com

SECONDARY CONTACT:
 LONDON BRADSHAW
 469.955.1001
 london@acardendesign.com



PROJECT DEVELOPER:
 SEVEN FIFTEEN CUSTOM HOMES

PRIMARY CONTACT:
 KRISTIAN ROBINSON
 214.886.1770
 Kristian.Robinson@sevenfifteeninvest.com

14911 LACEHAVEN DRIVE

+ BLOCK: J18188
 + LOT: 11

14911 LACEHAVEN DRIVE, DALLAS TEXAS 75248
 DALLAS COUNTY

2026-04-22 14911 LACEHAVEN DRIVE PERMIT DOCUMENTS

NOTIFY PROJECT DESIGN TEAM AND GENERAL CONTRACTOR IN WRITING OF ALL CORRECTIONS IN DOCUMENTATION PRIOR TO CONTINUING WORK.

3D VIEWS

A-9

PRINT SCALE: 3/32" = 1'-0"